

SHOCKproof™ lockers



Probe offer their high quality steel lockers with 10mm solid grade laminate **overlay and inset doors** (overlay pictured).
For more about this amazing material visit trespa.com, formica.co.uk or arpaindustriale.com



STORAGE DESIGN LIMITED
TEL: 01446 772614
Email: Info@storage-design.ltd.uk

14

WEB www.storage-design.ltd.uk

WEB: www.lockercatalogue.co.uk

PRIORITY SCHOOL BUILDING PROGRAMME ✓

Priority School building Programme is a government initiative to rebuild or renew all secondary schools.

15

OVERLAY DOORS



OPTIONAL SLOPING TOP AVAILABLE



NUMBERING SYSTEM

Available at additional cost.
Number plates will be recessed into door if ordered with lockers.

LOCK OPTIONS

See page 26 for a wide range of lock options.

HINGE SECURING PLATE

This strong hinge incorporates an integral securing plate which clamps the door to the hinge giving added security.

HIGH SECURITY WELDED COMPARTMENT DIVIDER INCORPORATES INTERNAL DOOR STOP AND SILL

NEW 180° OPENING

This strong hinge offers 180° wide opening.



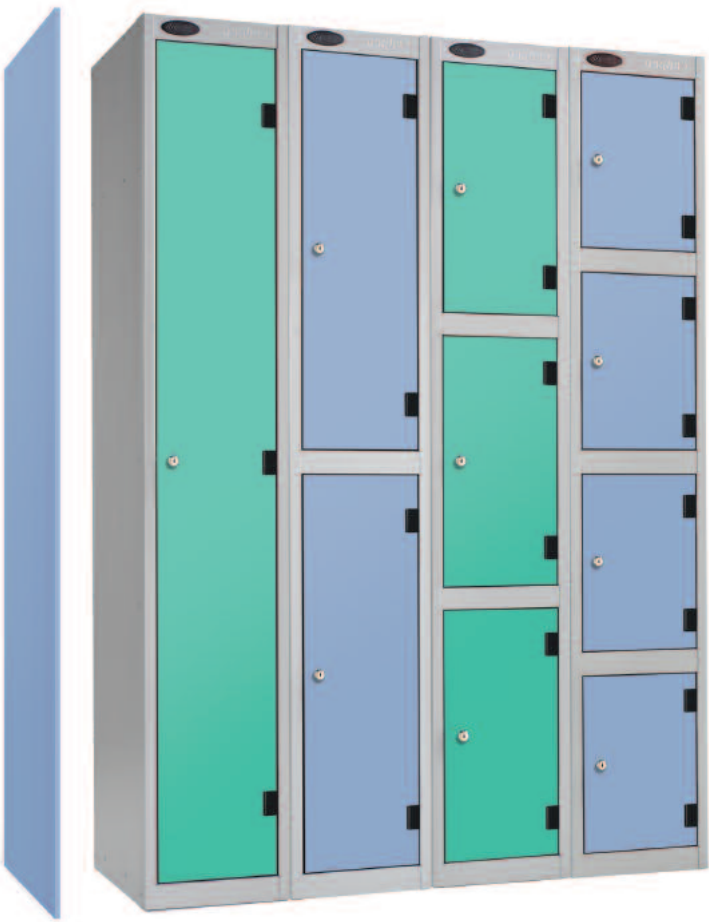
AVAILABLE IN 1, 2, 3 AND 4 TIER

Single and two tier doors subject to minimum quantity.



Formica and the Formica anvil device are registered trademarks of The Diller Corporation.

INSET DOORS



NEW 180° OPENING HINGE

This hinge offers unparalleled levels of access to each compartment making full use of clear entry.



LAMINATE DOORS



SOLID LAMINATE 10mm FIRE CLASSIFICATION

Type: CGS - Standard (Non-FR): Euroclass C-s1, d0 EN 13501-1
Type: CGF - FR (Fire Resistant): Euroclass B-s1, d0 EN 13501-1 (at additional cost)

STOCK DOOR COLOURS

Single and two tier doors subject to minimum quantity.



RED
PRO-0561



BLUE
PRO-0711



OAK
PRO W74 01



SPECKLED WHITE
PRO-3194



STEEL SILVER BODY

NON STOCK COLOURS

Subject to minimum quantity of 15 doors. Hundreds of other colours available from alternative Laminate manufacturers.

PLAIN COLOURS



PRO-0682



PRO-0647



PRO-0660



PRO-0644



PRO-0569



PRO-0605



PRO-0594



PRO-0001



PRO-0211



PRO-0623



PRO-0607

WOODGRAIN EFFECT AND PATTERNED FINISHES



PRO-0997



PRO-1852



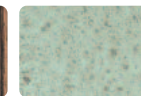
PRO-4327



PRO-4511



PRO-4390



PRO-9133



PRO-9131

Please note that due to printing restrictions colours represented may differ from original product. We recommend you request a colour swatch before ordering.

