

avero

The workstation system

bott



Work efficiently

Welcome





Content:

Welcome	04 – 05
Manual Assembly	06 – 07
Why avero	08 – 09
Ergonomic Design	10 – 11
ESD Protection	12 – 13
Flexible Production Solutions	14 – 15
Material Flow	16 – 17
Configura Planning	18 – 19
FIFo Shelf and System Packing Table	20 – 21

Modules and Accessories

Individual Workplaces	23 – 26
Information for your Product Choice	27
Bench Frame with Height Adjustment	28 – 29
Work Tops	30 – 31
Bench Top Accessories	32 – 51
Accessories for System and Swivel Frames	52 – 55
Accessories for Bench Frame	56 – 59
Accessories	60 – 68
Mobile Systems	69 – 73

avero

avero

Welcome to Manual Assembly

The Bott Group has been developing workplace storage solution for over 80 years, and has facilities across Europe. Over this period, the family-owned company has been driven by the principles of innovating to solve customer problems and delivering consistently high levels of service and quality, resulting in consistent business growth and a loyal customer base.

The company has specialist expertise in delivering efficient working environments for both static and in-vehicle applications.

The workstation system



The avero manual assembly system came about as a result of in-depth research into customers' challenges in complex manual assembly and packing applications. The resulting solution combines advanced design, high quality manufacture and a flexible approach to the delivery of not only this superb product, but also a full design and aftersales service.

avero



Manual Assembly

Ever shorter product life cycles, combined with demanding lead times and a challenging competitive environment, push leading organisations to optimise operations to deliver both flexibility and efficiency. The lean agenda demands small batch sizes and operations which can quickly be reconfigured to respond to changing customer demands.

The flexibility of manual assembly provides an attractive solution to these challenges. However new concerns then arise: How can companies ensure an ergonomically correct workplace? How can human error be minimised? And importantly, how can the flexibility benefits of a manual solution be maximised?

At Bott, we believe that investing in a professional system is key to creating the optimal operational process.



Energy and utilities services



Secure cable routing



avero



Why avero

Bott avero was developed to address these concerns; the system allows for fully featured manual assembly lines to be created. Product highlights include:

- Ergonomic optimised design
- A comprehensive range covering:
 - Stand-alone workstations
 - Assembly lines
 - Transport lines
 - Mobile systems
 - Power and lighting integration
 - ESD solution for electronic products.
- A flexible and modular system architecture, which allows for customised applications and seamless expansion.
- An inclusive full 3D design and consultation service.

avero | Why avero



avero



Ergonomic Design

To ensure both staff welfare and efficiency, ergonomic design was key for the avero range with the following features being present:

- Adjustable working height options to allow seated or standing working, with ergonomic items such as user footrests
- Tilting and swivelling options to allow users to position parts bins in the most comfortable positions
- Lighting and magnification solutions, enabling the creation of a worker-friendly environment.

In addition, as with all Bott products, the avero range has been designed to avoid sharp edges and other possible workplace hazards.

avero | Ergonomic Design



Adjusting for tilt and distance



Visual aids and lighting



Alternate sitting and standing



avero



ESD Protection

The averó system was designed for electronic component assembly and packaging, hence the presence of an integrated ESD-compliant solution. All averó workstations are equipped with conductive surfaces and component connections, enabling them to be converted to ESD-compliant workstations at any point with only minor changes.





avero



Flexible Production Solutions

The Bott avero system has been designed with business growth and change in mind, a philosophy which has driven the creation of a future proofed system which enables customers to expand their facilities to meet operational demands. This flexibility is achieved through a modular design approach, which maximises both functionality and adaptability, delivering a system which is scalable to meet your business requirements.

- Standalone workstations
- Multi-workstations
- Assembly lines
- Transport lines
- Mobile systems

avero | Flexible Production Solutions

Whatever your requirements, you can be sure that the Bott avero system can provide the ideal solution:

Stand Alone Workstations

The modular nature of avero allows workstations to be designed around your processes and completed with integrated storage, lighting and technology as required.

Assembly and Transport Lines

Bott avero has been designed to provide flexible production solutions. Features such as integrated rollers and ball surfaces allow the development of efficient and hardwearing transport systems which form part of an integrated assembly-line system.

Mobile System Options

The system also includes mobile solutions for offline working; these are fully integrated with the complete avero solution enabling efficient working as well as a smart and uniform appearance.



Tool-free part transfer

cubioPIN
One locking system for the whole operation



Cubio design integrated in avero



Surfaces and colours with high quality feel



avero



Material flow

As well as providing stand-alone solutions the Bott averro system allows customers to create complete production or packing lines. To maximise efficiency, the averro system features technologies such as FiFo shelves and roller lines to create efficient and integrated solutions.

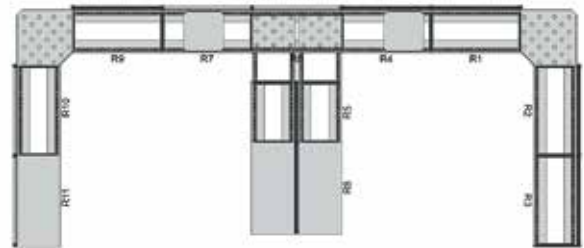
avero | Material flow



Motion on all levels



avero



Configura Planning

Bott understand that your requirements are unique and that an off-the-shelf solution is unlikely to give the required level of performance. With this in mind, averro has been designed as a modular system, which allows a high level of flexibility and future seamless expansion.

In order to develop your application, Bott provide a full sales and solution development service, enabling us to deliver a product which is matched to your requirements.

Throughout the process a single point of contact enables easy communication, and high quality 3D planning allows you to visualise your solution at an early stage.

avero | Configura Planning

- User needs analysis (including site visits)
- Initial concept development on our 3D system
- Final planning design, and completed 3D renders
- Production
- Delivery and on-site assembly
- Long-term product support from a stable partner.



Drawn planning



Final implementation

avero | FIFO Shelf

FIFO Shelf



- Example of an individually-configured solution
- Available system widths: 900 and 1350 mm
- System depths: 600 and 900 mm
- Overall width and depth are modularly expandable
- Angle adjustment according to the track length



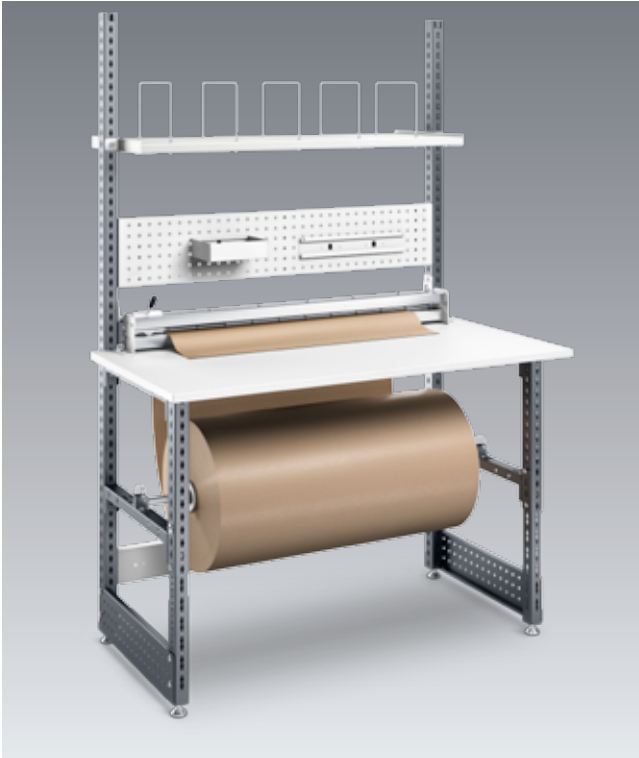
Perfect work thanks to a steady material flow



For returning workpiece carriers/boxes

avero | System Packing Table

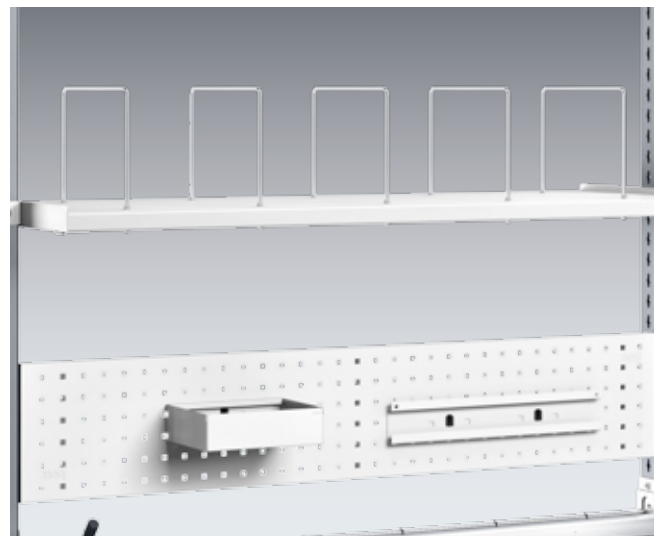
System packing table with roll system and cutting device



- Example of an individually-configured solution
- With provisioning for packaging material, cutting device
- Table height is configurable in 20mm increments when installing the base feet
- 2 height-adjustable bases
- Direct-coated work tops
- Lower uncoiling system
- Cutting device with 1200mm cutting width
- Upper shelf with 5 separator brackets with 250mm intervals
- Perfo panel, tray and support rail for bottBoxes



Cutting device with 1200mm cutting width



Separator bracket for clear subdivision of collapsible boxes as well as additional shipping and packaging materials

avero

for a quick start

avero modules are an alternative to the detailed and individual planning of your new assembly workstations. They have important basic functions, can be ordered quickly and can be supplemented with a variety of accessories.



Content:

Modules and Accessories

Individual Workplaces	23 – 26
Information for your Product Choice	27
Bench Frame with Height Adjustment	28 – 29
Work Tops	30 – 31
Bench top Accessories	32 – 51
Accessories for System and Swivel Frames	52 – 55
Accessories for Bench Frame	56 – 59
Accessories	60 – 68
Mobile Systems	69 – 73

avero | Standalone workstations

Complete workstation 1



- 3 x vertical profiles
- 3 x cable ducts with brush strips for vertical profile
- 2 x arms
- 1 x hanging drawer cabinet with 2 drawers 100 mm and lock
- 1 x track rail with trolley
- 1 x light 36 W with 5m connecting cable and three pin grounded plug
- 1 x retainer rail with sliding socket outlet strip 3 x grounded plug, ON/OFF switch and 3 m connection cable with three pin grounded plug
- 2 x perfo perforated hole panels 480 mm high for system width 450 mm
- 1 x perfo perforated hole panel 240 mm high for system width 450 mm
- 1 x tray 350 mm deep for system frame 450 mm equipped with 3 bott boxes, size 1-3-165
- 2 x trays 200 mm deep for system frame 450 mm equipped with 3 bott boxes, size 1-2-90
- 1 x swivel frame, system width 660 mm
- 1 x perfo perforated hole panel for swivel frame
- 1 x tray 350 mm deep for swivel frame equipped with 4 bott boxes, size 1-3-165
- 1 x retainer rail for swivel frame equipped with 5 bott boxes, size 1-1-65
- Laminate-coated worktop

Design	Dimensions W x D x H mm	Dimensions, worktop W x D x H mm	Height of work surface: from X to Y mm	Item no.
Height adjustment in the grid	1500 x 870 x 2035-2435	1500 x 750 x 30	743 - 1143	410 32 025.16
Height adjustment with hand crank	1500 x 870 x 2035-2435	1500 x 750 x 30	743 - 1143	410 32 029.16
Height adjustment with electric motor	1500 x 870 x 2035-2435	1500 x 750 x 30	743 - 1143	410 32 024.16

avero | Standalone workstations

Complete workstation 2



- 2 x vertical profiles
- 2 x cable ducts with brush strips for vertical profile
- 2 x arms for vertical profile
- Hanging drawer cabinet with 2 drawers 200 mm and lock
- 1 x track rail with trolley
- 1 x standard light with 5 m connecting cable and three pin grounded plug
- 1 x retaining rail with sliding socket outlet strip 3 x grounded plug, ON/OFF switch and 3 m connection cable with three pin grounded plug
- 1 x perforated panel for system width 1350 mm, system height 240 mm
- 1 x tray 200 mm deep equipped with 10 bott boxes, size 1-2-90
- 1 x tray 350 mm deep equipped with 10 bott boxes, size 1-3-165
- 1 x swivel arm with system frame
- 1 x perforated hole panel for system frame
- 1 x tray 350 mm deep for system frame, equipped with 4 bott boxes, size 1-1-65
- Laminate-coated worktop

Design	Dimensions W x D x H mm	Dimensions, worktop W x D x H mm	Height of work surface: from X to Y mm	Item no.
Height adjustment in the grid	1500 x 870 x 2035-2435	1500 x 750 x 30	743 - 1143	410 32 026.16
Height adjustment with hand crank	1500 x 870 x 2035-2435	1500 x 750 x 30	743 - 1143	410 32 030.16
Height adjustment with electric motor	1500 x 870 x 2035-2435	1500 x 750 x 30	743 - 1143	410 32 021.16



avero | Standalone workstations

Complete workstation 3



- 2 x vertical profiles
- 2 x cable ducts with brush strips for vertical profile
- 2 x arms
- 1 x hanging drawer cabinet with one drawer 400 mm and lock
- 1 x track rail with trolley
- 1 x light 36 W with 5 m connecting cable and three pin grounded plug
- 1 x retainer rail with sliding socket outlet strip 3 x grounded plug, ON/OFF switch and 3 m connection cable with three pin grounded plug
- 1 x perfo perforated panel for system width 900 mm, system height 240 mm
- 1 x tray 200 mm deep equipped with 6 bott boxes, size 1-2-90
- 1 x tray 350 mm deep equipped with 6 bott boxes, size 1-3-165
- 1 x retainer rail equipped with 6 bott boxes, size 1-2-90
- 1 x swivel frame, system width 660 mm
- 1 x perfo perforated hole panel for swivel frame
- 1 x tray 350 mm deep for swivel frame equipped with 4 bott boxes, size 1-3-165
- 1 x retainer rail for swivel frame equipped with 5 bott boxes, size 1-1-65
- Laminate-coated worktop

Design	Dimensions W x D x H mm	Dimensions, worktop W x D x H mm	Height of work surface: from X to Y mm	Item no.
Height adjustment in the grid	1500 x 870 x 2035-2435	1500 x 750 x 30	743 - 1143	410 32 027.16
Height adjustment with hand crank	1500 x 870 x 2035-2435	1500 x 750 x 30	743 - 1143	410 32 031.16
Height adjustment with electric motor	1500 x 870 x 2035-2435	1500 x 750 x 30	743 - 1143	410 32 023.16

avero | Standalone workstations

Complete workstation 4



- 3 x vertical profiles
- 3 x cable ducts with brush strips for vertical profile
- 2 x arms
- 1 x hanging drawer cabinet with 2 drawers 200 mm and lock
- 1 x track rail with trolley
- 1 x standard light with 5 m connecting cable and three pin grounded plug
- 1 x retainer rail with sliding socket outlet strip 3 x grounded plug, ON/OFF switch and 3 m connection cable with three pin grounded plug
- 1 x perfo perforated panel for system width 900 mm, system height 240 mm
- 2 x trays 200 mm deep equipped with 6 bott boxes, size 1-2-90
- 2 x perfo perforated panels for system width 450 mm, system height 480 mm
- Laminate-coated worktop



Design	Dimensions W x D x H mm	Dimensions, worktop W x D x H mm	Height of work surface: from X to Y mm	Item no.
Height adjustment in the grid	1500 x 870 x 2035-2435	1500 x 750 x 30	743 - 1143	410 32 028.16
Height adjustment with hand crank	1500 x 870 x 2035-2435	1500 x 750 x 30	743 - 1143	410 32 032.16
Height adjustment with electric motor	1500 x 870 x 2035-2435	1500 x 750 x 30	743 - 1143	410 32 022.16

avero | Information for your product choice

Framework with height adjustment by electric motor



- Mechanical, continuously height adjustable with electric motor
- Memory function for three working heights
- Base height (without worktop) 713-1113 mm
- Load capacity 200 kg

Framework with manual height adjustment



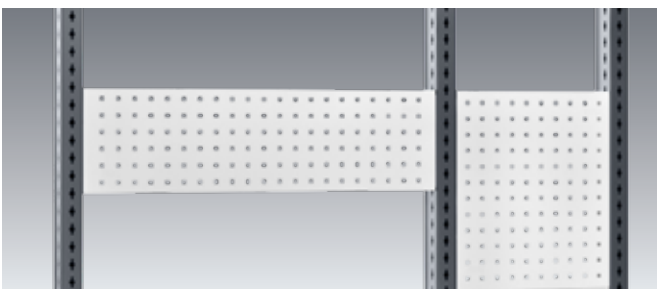
- Adjustment via bolt in foot section
- Base height (without worktop) 713-1113 mm, in 25 mm increments
- Load capacity 200 kg

Framework with height adjustment by hand crank



- Hydraulic, continuously height adjustable with hand crank
- Base height (without worktop) 713-1113 for desk depth 750 mm and 900 mm, 713-1013 mm for desk depth 600 mm
- Load capacity 200 kg

avero system widths



- avero system dimensions enable the modular combination of components and assemblies
- System widths of desk tops and accessories: 450, 900, 1350, 1800 mm

avero | Information framework

Framework with height adjustment without Work Top



- Stable steel-aluminium frame
- Optional rear installation for vertical profile in a 225 mm grid
- Continuous height adjustment from 743 mm to 1143 mm when using a 30mm thick work top
- 4 levelling bases for evening out floor unevenness, levelling base Ø 30 mm, level base shifting area 10 mm
- Lowest cross brace furthermore allows for a mountable foot rest or PC mounting bracket
- ESD version with conductive powder cover, conductive levelling bases, EBP with 310 mm push button connections and central grounding point
- Loading Capacity: 200 kg
- Color: light gray (RAL 7035) powder-coated/ conductive powder-coated (RAL 7035)

Basic frame with electrical height adjustment (no worktop)

System Width mm	Suitable for	for work tops W x D mm	Height adjustment range for 30mm work top in mm	Item No.	Item No. ESD
900	DE	1000/1200 x 600	743-1143	410 07 031.16	410 07 031.20
900	DE	1000/1200 x 750/900	743-1143	410 07 034.16	410 07 034.20
900	UK	1000/1200 x 600	743-1143	410 07 081.16	410 07 081.20
900	UK	1000/1200 x 750/900	743-1143	410 07 082.16	410 07 082.20
1350	DE	1500 x 600	743-1143	410 07 032.16	410 07 032.20
1350	DE	1500 x 750/900	743-1143	410 07 035.16	410 07 035.20
1350	UK	1500 x 600	743-1143	410 07 083.16	410 07 083.20
1350	UK	1500 x 750/900	743-1143	410 07 084.16	410 07 084.20
1800	DE	2000 x 600	743-1143	410 07 033.16	410 07 033.20
1800	DE	2000 x 750/900	743-1143	410 07 036.16	410 07 036.20
1800	UK	2000 x 600	743-1143	410 07 085.16	410 07 085.20
1800	UK	2000 x 750/900	743-1143	410 07 086.16	410 07 086.20

Framework with height adjustment via hand crank without work top

System Width mm	for work tops W x D mm	Height adjustment range for 30mm work top in mm	Item No.	Item No. ESD
900	1000/1200 x 600	743-1043	410 07 057.16	410 07 057.20
900	1000/1200 x 750/900	743-1143	410 07 060.16	410 07 060.20
1350	1500 x 600	743-1043	410 07 058.16	410 07 058.20
1350	1500 x 750/900	743-1143	410 07 061.16	410 07 061.20
1800	2000 x 600	743-1043	410 07 059.16	410 07 059.20
1800	2000 x 750/900	743-1143	410 07 062.16	410 07 062.20

avero | Framework

Framework with manual height adjustment without work top

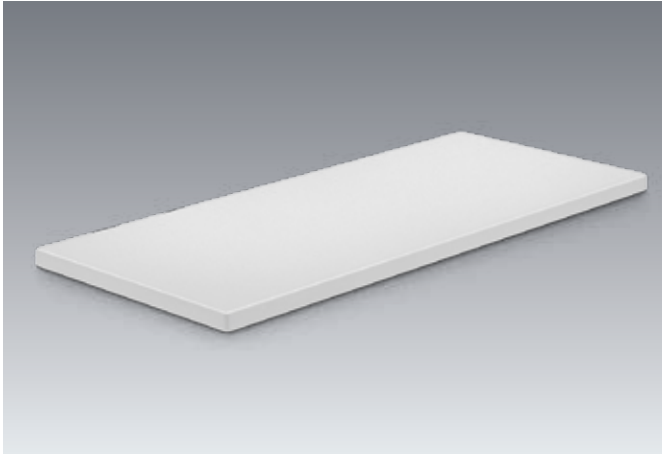
- Manual height adjustment from 743 to 1143 mm in a 25 mm grid when using a 30mm thick work top

System Width mm	for work tops W x D mm	Height adjustment range for 30mm work top in mm	Item No.	Item No. ESD
900	1000/1200 x 600	743-1143	410 07 037.16	410 07 037.20
900	1000/1200 x 750/900	743-1143	410 07 040.16	410 07 040.20
1350	1500 x 600	743-1143	410 07 038.16	410 07 038.20
1350	1500 x 750/900	743-1143	410 07 041.16	410 07 041.20
1800	2000 x 600	743-1143	410 07 039.16	410 07 039.20
1800	2000 x 750/900	743-1143	410 07 042.16	410 07 042.20
Pre-Installation Framework			300 01 021	



avero | Information work tops

Direct-Coated Work Tops

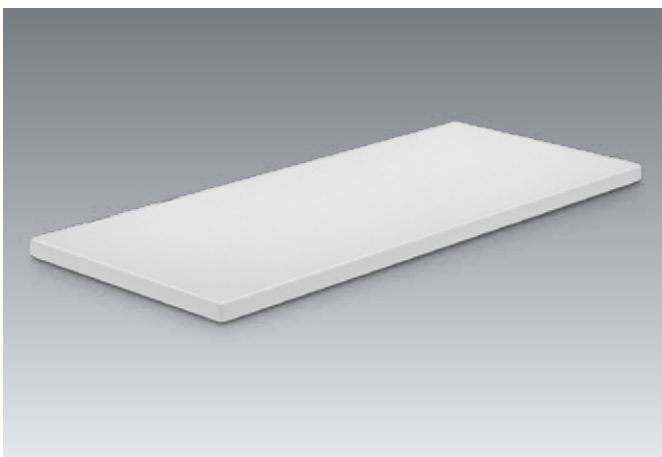


- Thickness: 30 mm
- Supporting Material: Particle Board according to EN309/EN312
- Upper side: Melamine Resin Direct Coating according to EN14322/EN14323
- Lower side: Melamine Resin Direct Coating according to EN14322/EN14323
- Edges: 3mm anti-static ABS edges, rounded R3 Radius
- Coating Characteristics: High abrasion resistance, high impact resistance, high scratch resistance, insensitive to boiling water, resistance against common chemicals, solutions, weak acids and leaches
- Fire Protection Classification: D-s2, d0
- Conductivity Value: according to IEC61340

ESD Version

- Carrier Material: volume conductive ESD particle board according to EN309/EN312
- Upper / lower side: Melamine Resin Direct Coating according to EN14322/EN14323

Laminate-Coated Work Tops



- Thickness: 30 mm
- Supporting Material: Particle Board according to EN309/EN312
- Upper side: Melamine Resin Direct Coating according to EN14322/EN14323
- Lower side: Melamine Resin Direct Coating according to EN14322/EN14323
- Edges: 3mm anti-static ABS edges, rounded R3 Radius
- Coating Characteristics: High abrasion resistance, high impact resistance, high scratch resistance, insensitive to boiling water, resistance against common chemicals, solutions, weak acids and leaches
- Fire Protection Classification: D-s2, d0
- Conductivity Value: according to IEC61340

ESD Version

- Carrier Material: volume conductive ESD particle board according to EN309/EN312
- Upper side: HPL Laminate 0.8mm according to EN438
- Lower side: HPL Laminate

avero | Work tops

Beech Multiplex Work Tops



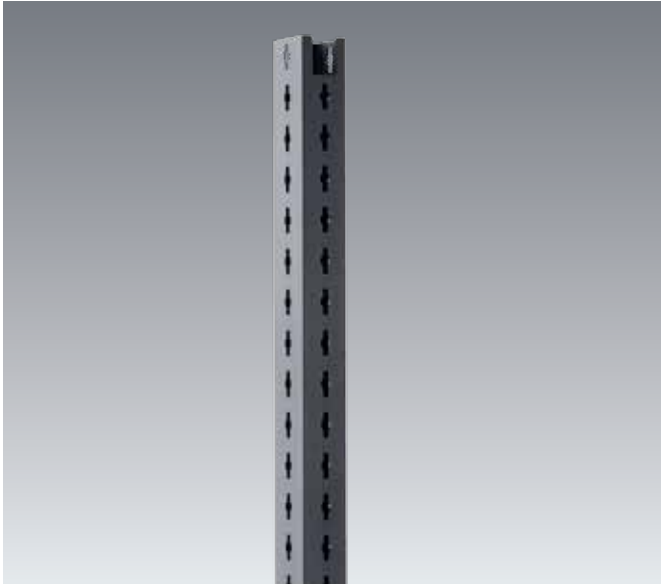
- Thickness: 30 mm
- Rating: II / III according to DIN 68705 Part 2
- Upper side: lubricated
- Lower side: lubricated
- Color: Natural beech
- Adhesion: multiple-layered, crosswise-adhered beech veneers, adhesion resistant in areas with elevated air humidity and occasional water contact.
- Quality II/III according to DIN 68705 Part 2

Work Tops for Framework

Dimensions W x D x H mm	Directly-coated Item No.	Directly-coated Item No. ESD	Laminate-coated Item No.	Laminate-coated Item No. ESD	Beech Multiplex Item No.
1000 x 600 x 30	412 01 082.01	412 01 082.04	412 01 082.02	412 01 082.05	412 01 082.08
1000 x 750 x 30	412 01 083.01	412 01 083.04	412 01 083.02	412 01 083.05	412 01 083.08
1200 x 600 x 30	412 01 084.01	412 01 084.04	412 01 084.02	412 01 084.05	412 01 084.08
1200 x 750 x 30	412 01 085.01	412 01 085.04	412 01 085.02	412 01 085.05	412 01 085.08
1200 x 900 x 30	412 01 086.01	412 01 086.04	412 01 086.02	412 01 086.05	412 01 086.08
1500 x 600 x 30	412 01 087.01	412 01 087.04	412 01 087.02	412 01 087.05	412 01 087.08
1500 x 750 x 30	412 01 088.01	412 01 088.04	412 01 088.02	412 01 088.05	412 01 088.08
1500 x 900 x 30	412 01 089.01	412 01 089.04	412 01 089.02	412 01 089.05	412 01 089.08
2000 x 600 x 30	412 01 090.01	412 01 090.04	412 01 090.02	412 01 090.05	412 01 090.08
2000 x 750 x 30	412 01 091.01	412 01 091.04	412 01 091.02	412 01 091.05	412 01 091.08
2000 x 900 x 30	412 01 092.01	412 01 092.04	412 01 092.02	412 01 092.05	412 01 092.08

avero | Accessories for bench top

Vertical profile



- Stable steel tube with avero perforation on all 4 sides
- For mounting avero accessories in height increments of 40 mm
- Mounting rear on the avero Framework in grid width 225 mm
- Colour: anthracite grey (RAL 7016)



Dimensions
W x D x H mm

50 x 60 x 1837

Item no.

410 12 007.71

Cable duct



- Set of cable holders for mounting on the vertical profile
- Cables or hoses are bundled and secured by the cable holder
- Cable duct with two-sided vertical brush strips for concealed cable routing
- Cable duct is clipped to the cable holder
- Cable outlet through brush strips at any point
- Maximum cable/hose diameter 25 mm for cable outlet to the brush strips
- Colour: black

Use

For mounting frame

For standalone workstations

For multi-user systems

Dimensions
W x D x H mm

48 x 35 x 1037

48 x 35 x 1837

48 x 35 x 2157

Item no.

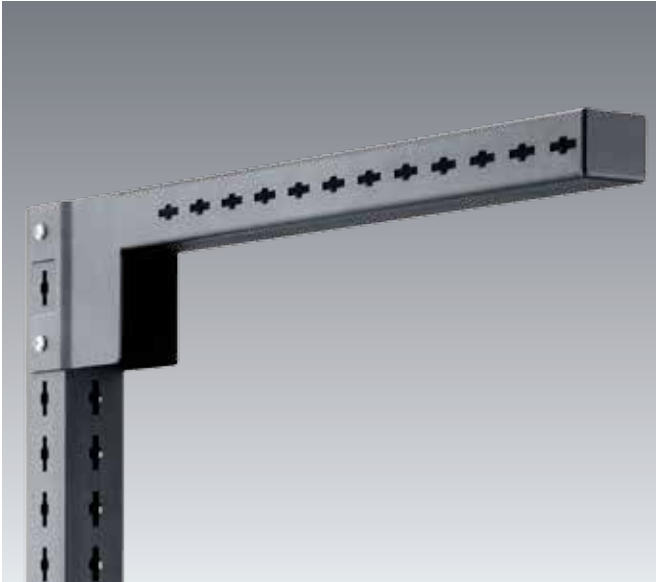
435 04 004.10

435 04 002.10

435 04 003.10

avero | Accessories for bench top

Arm



- Assembly on top on the vertical profile
- With avero with holes on the side faces
- For mounting avero accessories in depth increments of 40 mm
- Colour: anthracite grey (RAL 7016)

Dimensions W x D x H mm	Item no.
57 x 645 x 117	410 11 010.71

Track rail



- For mounting on the avero arm
- Depth can be variably mounted in 40 mm increments
- Including 1 carriage with snap hook
- ESD model has conductive powder coating and trolley with metal castors
- Colour: light grey (RAL 7035)

Suitable for Framework width mm	Dimensions D x H mm	Item no.	Item no. ESD
900	30 x 27	410 11 026.16	410 11 026.20
1350	30 x 27	410 11 027.16	410 11 027.20
1800	30 x 27	410 11 028.16	410 11 028.20
Carriage	22 x 98	809 11 002	809 11 007
Stopper Pair	30 x 25	808 02 005	

avero | Accessories for bench top

Fluorescent lamps



- Efficient - uses compact fluorescent lamps
- Low-glare - prism cover on the lamps
- ON/OFF switch on the housing face
- GST-18 mains plug on the housing rear
- Neutral White 4000 Kelvin
- For mounting on the avero arm
- Depth can be variably mounted in 40 mm increments
- Colour: Anodised aluminium

System width mm	Light level at 100cm	Dimensions W x D x H mm	With light	Item no.
900	900 lx	898 x 135 x 60	T16 - 39 W	505 02 064.97
1350	1000 lx	1338 x 135 x 60	T16 - 54 W	505 02 065.97
1800	1500 lx	1778 x 135 x 60	T16 - 80 W	505 02 066.97

LED light

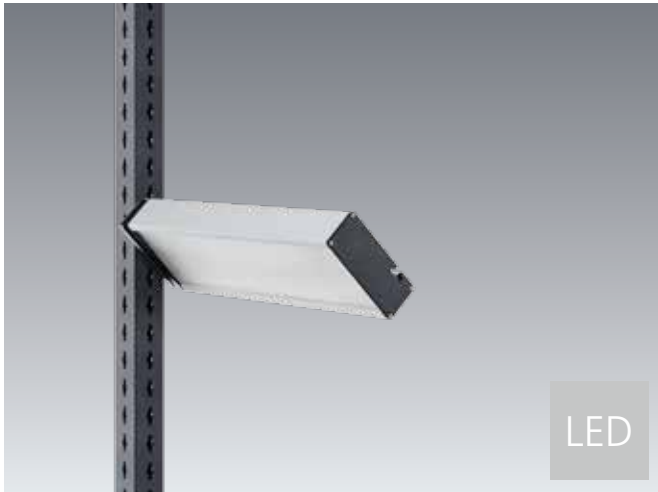


- Especially energy-efficient and long-lasting by using LED lamps
- Low-glare - prism cover on the lamps
- ON/OFF switch on the housing face
- GST-18 mains plug on the housing rear
- Daylight White 5500 Kelvin
- for mounting on the avero arm
- Depth can be variably mounted in 40 mm increments
- Colour: Anodised aluminium

System width mm	Light level at 100cm	Dimensions W x D x H mm	With light	Item no.
900	900 lx	898 x 140 x 40	48 W LED	505 02 067.97
1350	1000 lx	1342 x 140 x 40	60 W LED	505 02 068.97
1800	1500 lx	1782 x 140 x 40	72 W LED	505 02 069.97

avero | Accessories for bench top

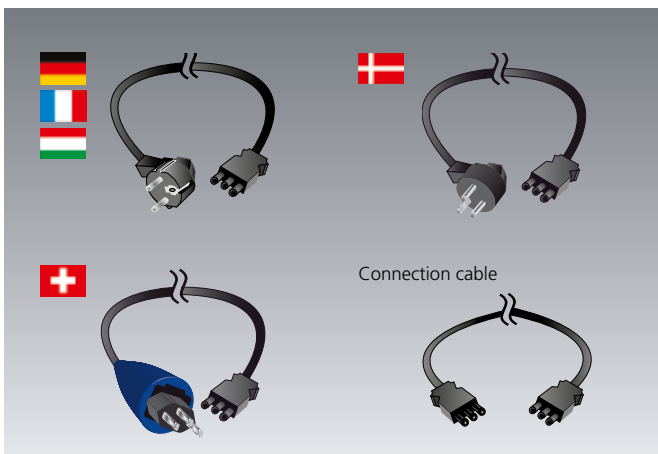
Lateral LED lighting strip



- Especially energy-efficient and long-lasting by using LED lamps
- Low-glare - prism cover on the lamps
- ON/OFF switch on the housing face
- GST-18 mains plug on the housing rear
- Daylight White 5500 Kelvin
- For mounting on the avero vertical profile
- Height can be variably mounted in 40 mm increments
- Inclination continuously adjustable
- Colour: Anodised aluminium

Dimensions W x D x H mm	Light level at 100cm	With light	Item no.
472 x 140 x 40	700 lx	24 W LED	505 02 070.97

Mains cable for lamps

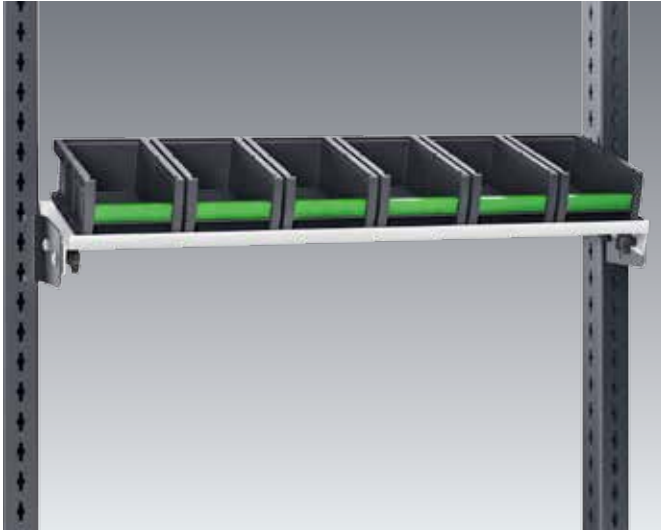


- GST-18 jack for connection to the socket-outlet strip or the energy strip

Design	Length m	Suitable for	Item no.
Grounded-plug, 16 A	3	D / F / HU	435 03 001
Grounded-plug, 16 A	5	D / F / HU	435 03 002
DK-plug 13A	3	DK	435 03 014
DK-plug 13A	5	DK	435 03 015
CH-plug type 23	3	CH	435 03 012
CH-plug type 23	5	CH	435 03 013
UK-plug 13A	3	UK	435 03 003
UK-plug 13A	5	UK	435 03 004
GST-18 plug - GST18 jack	1	Connection cable	435 03 007

avero | Accessories for bench top

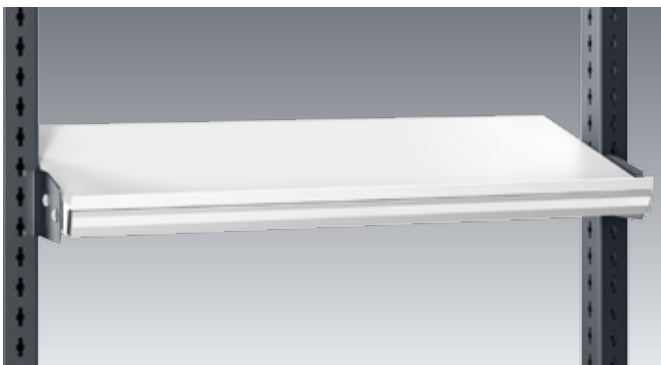
Tray with bott boxes



- Equipped with pick bins of the bott box series
- Made of powder-coated sheet steel
- With holders for suspending in the avero vertical profile
- One-sided edging strip 20 mm high
- Tray can be optionally mounted with the edging strip front or rear
- Inclination continuously adjustable +/- 30°
- Depth adjustable
- Distributed load 60 kg
- ESD version with conductive powder-coated tray and conductive bott boxes
- Colour: light grey (RAL 7035)

For system width mm	Dimensions W x D x H mm	Depth adjustment range mm	Quantity bott boxes 1-2-90	Quantity bott boxes 1-3-165	Item no.	Item no. ESD
450	396 x 200 x 126	67	3		410 11 047.16	410 11 047.20
900	846 x 200 x 126	67	6		410 11 048.16	410 11 048.20
1350	1296 x 200 x 126	67	10		410 11 049.16	410 11 049.20
1800	1746 x 200 x 126	67	13		410 11 050.16	410 11 050.20
450	396 x 350 x 200	217		3	410 11 051.16	410 11 051.20
900	846 x 350 x 200	217		6	410 11 052.16	410 11 052.20
1350	1296 x 350 x 200	217		10	410 11 053.16	410 11 053.20
1800	1746 x 350 x 200	217		13	410 11 054.16	410 11 054.20

Labelling strips for trays, 200/350 mm deep

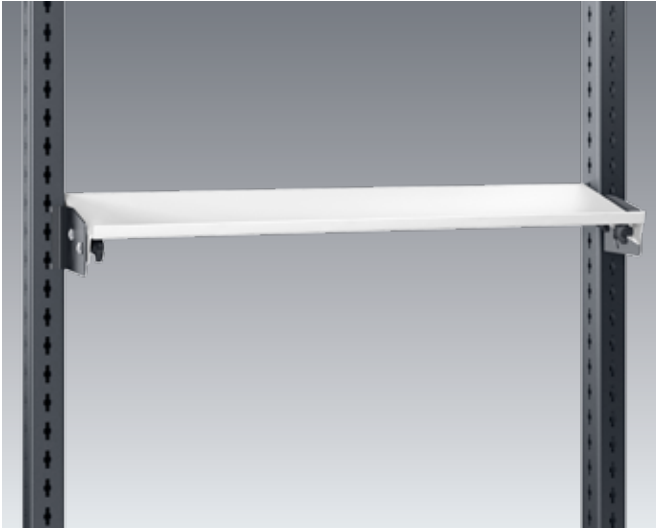


- Document templates for labelling are available for Free of charge label templates are available to download from www.bott.de/download
- Aluminium extruded parts
- For mounting front or rear to the 200 mm and 350 mm deep trays
- Groove for inserting a paper strip
- Colour: AL anodized

For system width mm	Dimensions W x D x H mm	Item no.
450	396 x 13 x 35	410 11 055.97
900	846 x 13 x 35	410 11 056.97
1350	1296 x 13 x 35	410 11 057.97
1800	1748 x 13 x 35	410 11 058.97

avero | Accessories for bench top

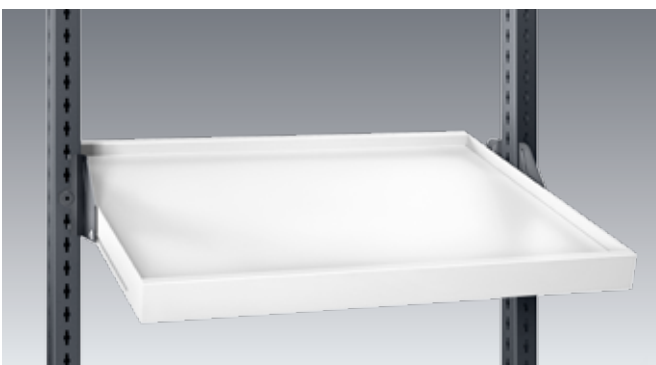
Tray 200/350 mm deep



- Made of powder-coated sheet steel
- With holders for suspending in the avero vertical profile
- One-sided edging strip 20 mm high
- Tray can be optionally mounted with the edging strip front or rear
- Inclination continuously adjustable +/- 30°
- Depth adjustable
- Distributed load 60 kg
- Colour: light grey (RAL 7035)

For system width mm	Dimensions W x D x H mm	Depth adjustment range mm	Item no.
450	396 x 200 x 55	72	421 05 001.20
900	846 x 200 x 55	72	421 05 002.20
1350	1296 x 200 x 55	72	421 05 003.20
1800	1746 x 200 x 55	72	421 05 004.20
450	396 x 350 x 55	216	421 05 005.20
900	846 x 350 x 55	216	421 05 006.20
1350	1296 x 350 x 55	216	421 05 007.20
1800	1746 x 350 x 55	216	421 05 008.20

Tray 650 mm deep



- Made of powder-coated sheet steel
- With holders for suspending in the avero vertical profile
- Edge-stripping on all sides, 25 mm high
- Inclination continuously adjustable +/- 30°
- Depth adjustable
- Distributed load 60 kg
- Colour: light grey (RAL 7035)

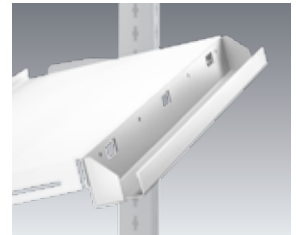
For system width mm	Dimensions W x D x H mm	Depth adjustment range mm	Item no.
450	396 x 650 x 62	180	421 05 013.20
900	846 x 650 x 62	180	421 05 014.20
1350	1296 x 650 x 62	180	421 05 015.20
1800	1746 x 650 x 62	180	421 05 016.20

avero | Accessories for bench top

Cable troughs for trays, 200/350 mm deep



- Made of powder-coated sheet steel
- For mounting on rear to the 200 mm and 350 mm deep trays
- Suitable for mounting socket-outlet strips from the avero program
- Colour: light grey (RAL 7035)



For system width mm	Dimensions W x D x H mm	Item no.
450	389 x 66 x 62	421 05 009.20
660	600 x 66 x 62	421 05 023.20
900	839 x 66 x 62	421 05 010.20
1350	1289 x 66 x 62	421 05 011.20
1800	1739 x 66 x 62	421 05 012.20



avero | Accessories for bench top

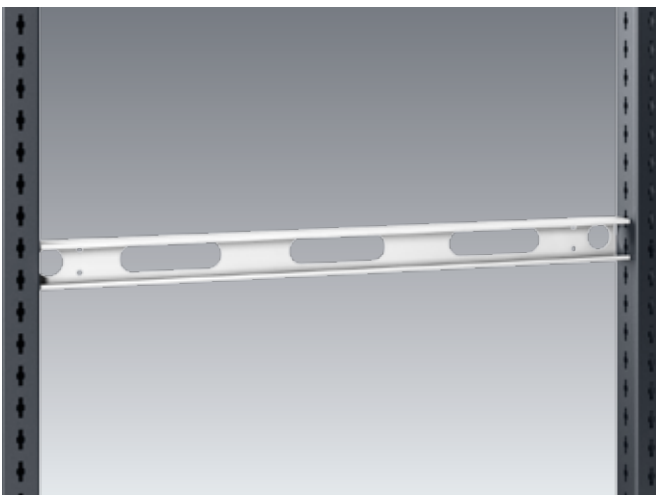
Preconfigured energy strips



- Modular, powder-coated sheet steel duct
- ON/OFF button with indicator lamp
- EMERGENCY STOP switch and 230 V line protection
- 4 grounded plug outlets, 230 V / 16 A
- 1 compressed air quick-release coupling NW 7.2 mm
- Empty panels for covering the remaining fields
- Plug-in connection cable, 3m with three pin grounded plug, 230 V / 16 A
- For mounting on the averø vertical profile
- Colour: light grey (RAL 7035)

For system width mm	Dimensions W x D x H mm	Item no.
900	835 x 80 x 150	510 01 110.16
1350	1285 x 80 x 150	510 01 111.16
1800	1735 x 80 x 150	510 01 112.16

Retainer rail for socket-outlet strips



- Suitable for insertion of socket-outlet strips of averø program
- With slot patterns on the rear for cable routing
- Made of powder-coated sheet steel
- For mounting on the averø vertical profile
- Colour: light grey (RAL 7035)



For system width mm	Dimensions W x D x H mm	Item no.
450	496 x 48 x 58	410 11 170.20
900	946 x 48 x 58	410 11 171.20
1350	1396 x 48 x 58	410 11 172.20
1800	1846 x 48 x 58	410 11 173.20

avero | Accessories for bench top

Socket-outlet strips

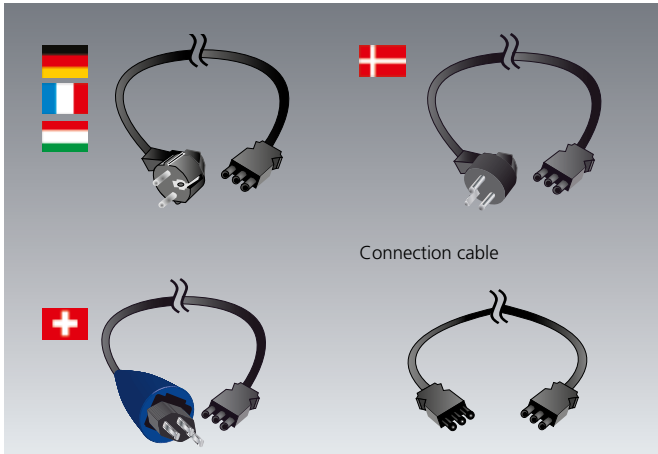


- Suitable for insertion of retainer rails of the avero program
- With ideal attachment set can be mounted on the avero vertical profile or the perfo perforated panels
- GST-18 plug connector for connecting a mains cable or a connection cable for additional socket-outlet strips
- Socket-outlet strips can be plugged directly together through the GST-18 plug connector
- Colour: black /AL anodised

Design	Dimensions W x D x H mm	Suitable for	Item no.
3 x grounded-plug socket-outlet 16A	220 x 44 x 52	D / HU	510 01 063
On/off switch, 3 x grounded-plug socket-outlet 16A	265 x 44 x 52	D / HU	510 01 064
FI 30 mA, On/off switch, 2 x grounded-plug socket-outlet 16A	360 x 78 x 78	D / HU	510 01 065
2 x grounded-plug socket-outlet 16A, 1 x USB, 1 x RJ45	220 x 44 x 52	D / HU	510 01 066
3 x socket-outlets	220 x 44 x 52	DK	510 01 067
On/off switch, 3 x socket-outlets	265 x 44 x 52	DK	510 01 068
FI 30 mA, On/off switch, 2 x socket-outlets	360 x 78 x 52	DK	510 01 069
2 x socket-outlets, 1 x USB, 1 x RJ45	220 x 44 x 52	DK	510 01 070
3 x socket-outlets	220 x 44 x 52	CH	510 01 071
On/off switch, 3 x socket-outlets	265 x 44 x 52	CH	510 01 072
FI 30 mA, On/off switch, 2 x socket-outlets	360 x 78 x 52	CH	510 01 073
2 x socket-outlets, 1 x USB, 1 x RJ45	220 x 44 x 52	CH	510 01 074
3x Socket	220 x 44 x 52	F	510 01 097
On/Off Switch 3x Socket	265 x 44 x 52	F	510 01 098
FI 30 mA, On/Off Switch, 2x Socket	360 x 78 x 52	F	510 01 099
2x Socket, 1x USB, 1x RJ45	220 x 44 x 52	F	510 01 100
3x Socket	285 x 44 x 52	UK	510 01 101
On/Off Switch 3x Socket	325 x 44 x 52	UK	510 01 102
FI 30 mA, On/Off Switch, 2x Socket	455 x 78 x 52	UK	510 01 103
2x Socket, 1x USB, 1x RJ45	255 x 44 x 52	UK	510 01 104

avero | Accessories for bench top

Mains cable for socket-outlet strips



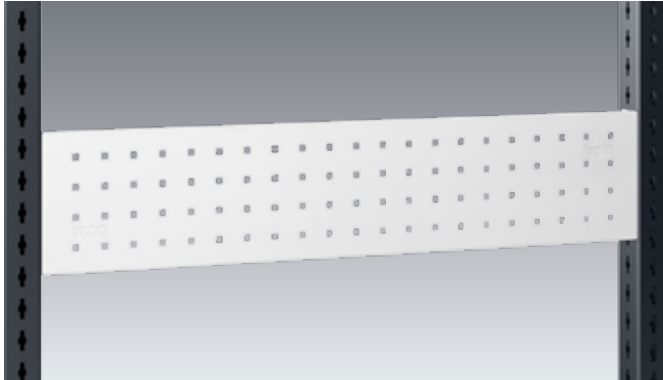
- GST-18 jack for connection to the socket-outlet strip or the energy strip

Design	Length m	Suitable for	Item no.
Grounded-plug, 16A	3	D / F / HU	435 03 001
Grounded-plug, 16A	5	D / F / HU	435 03 002
DK-plug 13A	3	DK	435 03 014
DK-plug 13A	5	DK	435 03 015
CH-plug type 23	3	CH	435 03 012
CH-plug type 23	5	CH	435 03 013
UK-plug 13A	3	UK	435 03 003
UK-plug 13A	5	UK	435 03 004
GST-18 plug - GST18 jack	1	Connection cable	435 03 007



avero | Accessories for bench top

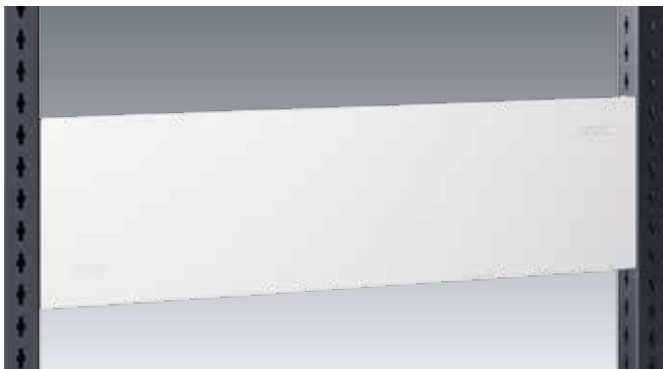
perfo perforated panels



- available in 3 heights
- 9.2 x 9.2 mm square holes in 38.1 mm grid
- For mounting holders and accessories to accommodate the bott perfo program
- For mounting on the avero vertical profile
- Colour: light grey (RAL 7035)

For system width mm	Dimensions W x D x H mm	Item no.
450	398 x 46 x 180	140 25 348.20
900	848 x 46 x 180	140 25 349.20
1350	1298 x 46 x 180	140 25 350.20
1800	1748 x 46 x 180	140 25 351.20
450	398 x 46 x 240	140 25 340.20
900	848 x 46 x 240	140 25 341.20
1350	1298 x 46 x 240	140 25 342.20
1800	1748 x 46 x 240	140 25 343.20
450	398 x 46 x 480	140 25 344.20
900	848 x 46 x 480	140 25 345.20
1350	1298 x 46 x 480	140 25 346.20
1800	1748 x 46 x 480	140 25 347.20

Trim plate

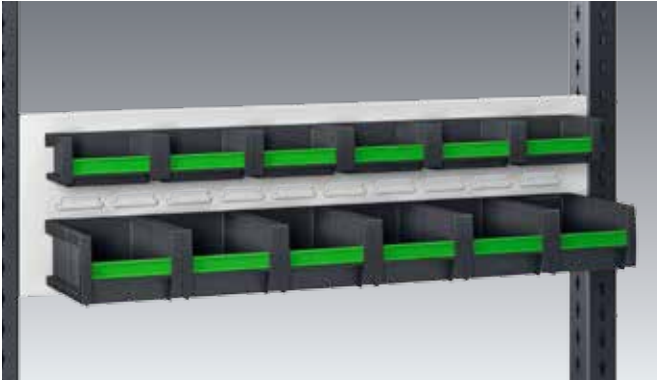


- available in 2 heights
- Made of powder-coated sheet steel
- For mounting on the avero vertical profile
- Colour: light grey (RAL 7035)

For system width mm	Dimensions W x D x H mm	Item no.
450	398 x 46 x 240	410 11 030.20
900	848 x 46 x 240	410 11 031.20
1350	1298 x 46 x 240	410 11 032.20
1800	1748 x 46 x 240	410 11 033.20
450	398 x 46 x 480	410 11 034.20
900	848 x 46 x 480	410 11 035.20
1350	1298 x 46 x 480	410 11 036.20
1800	1748 x 46 x 480	410 11 037.20

avero | Accessories for bench top

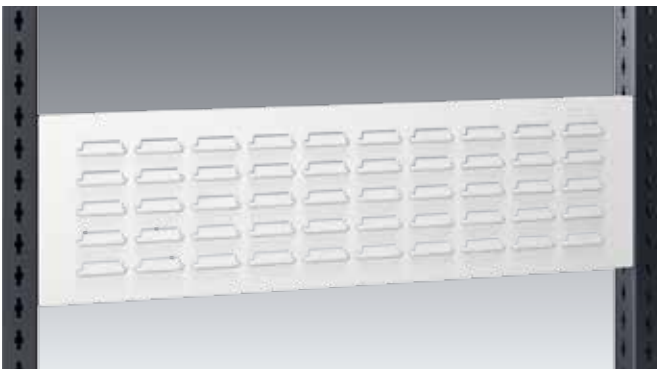
Louvered panels with bott boxes



- Slotted panels with perfo slot stamping
- Equipped with pick bins of the bott box series
- For mounting on the avero vertical profile
- ESD version with conductive powder slot panel and conductive bott boxes
- Colour: light grey (RAL 7035)
- Please refer to pages 46 to 47 for in-depth explanations on the bott boxes.

For system width mm	Dimensions W x D x H mm	Quantity bott boxes 1-1-65	Quantity bott boxes 1-2-90	Item no.	Item no. ESD
450	398 x 244 x 240	3	3	140 30 181.16	140 30 181.20
900	848 x 244 x 240	6	6	140 30 182.16	140 30 182.20
1350	1298 x 244 x 240	10	10	140 30 183.16	140 30 183.20
1800	1748 x 244 x 240	13	13	140 30 184.16	140 30 184.20
450	398 x 244 x 480	6	6	140 30 185.16	140 30 185.20
900	848 x 244 x 480	12	12	140 30 186.16	140 30 186.20
1350	1298 x 244 x 480	20	20	140 30 187.16	140 30 187.20
1800	1748 x 244 x 480	26	26	140 30 188.16	140 30 188.20

Louvered panels

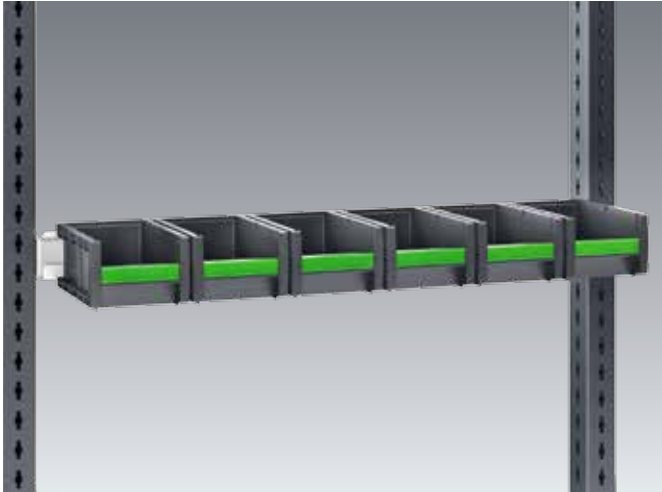


- With perfo slot stampings
- For mounting perfo adapters for holders and accessories of the bott perfo program and open front boxes and storage boxes
- for mounting on the avero vertical profile
- Colour: light grey (RAL 7035)

For system width mm	Dimensions W x D x H mm	Item no.
450	398 x 53 x 240	140 25 360.20
900	848 x 53 x 240	140 25 361.20
1350	1298 x 53 x 240	140 25 362.20
1800	1748 x 53 x 240	140 25 363.20
450	398 x 53 x 480	140 25 364.20
900	848 x 53 x 480	140 25 365.20
1350	1298 x 53 x 480	140 25 366.20
1800	1748 x 53 x 480	140 25 367.20

avero | Accessories for bench top

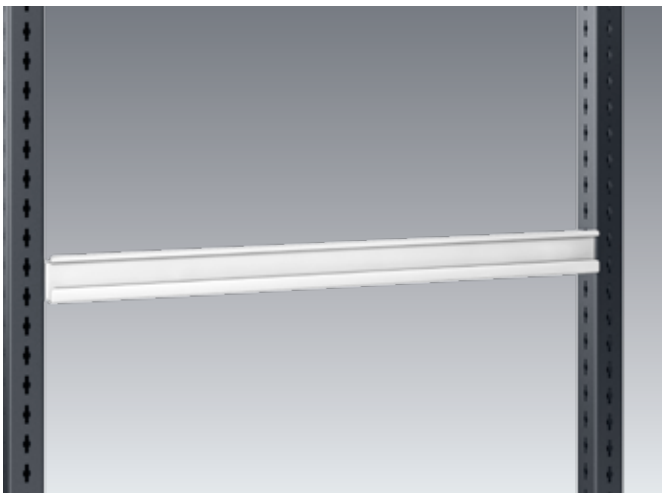
Retainer rail set with bott boxes



- Equipped with pick bins of the bott box series
- For mounting on the avero vertical profile
- Total load 25 kg with uniformly distributed load
- ESD version with conductive powder retainer rail and conductive bott boxes
- Colour: light grey (RAL 7035)
- Please refer to pages 46 to 47 for in-depth explanations on the bott boxes.

For system width mm	Dimensions W x D x H mm	Quantity bott boxes 1-2-90	Item no.	Item no. ESD
450	398 x 265 x 90	3	410 11 040.16	410 11 040.20
900	848 x 265 x 90	6	410 11 041.16	410 11 041.20
1350	1298 x 265 x 90	10	410 11 042.16	410 11 042.20

Retainer rails

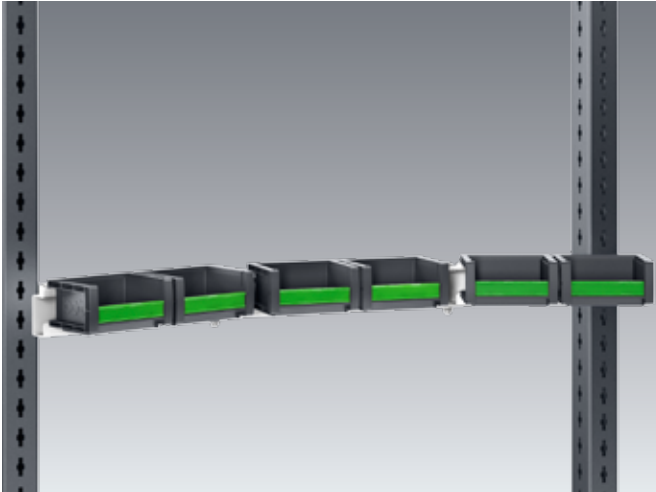


- For mounting pick boxes and storage bins
- For mounting on the avero vertical profile
- Total load 25 kg with uniformly distributed load
- Colour: light grey (RAL 7035)

For system width mm	Dimensions W x D x H mm	Item no.
450	398 x 78 x 65	410 11 014.20
900	848 x 78 x 65	410 11 015.20
1350	1298 x 78 x 65	410 11 016.20

avero | Accessories for bench top

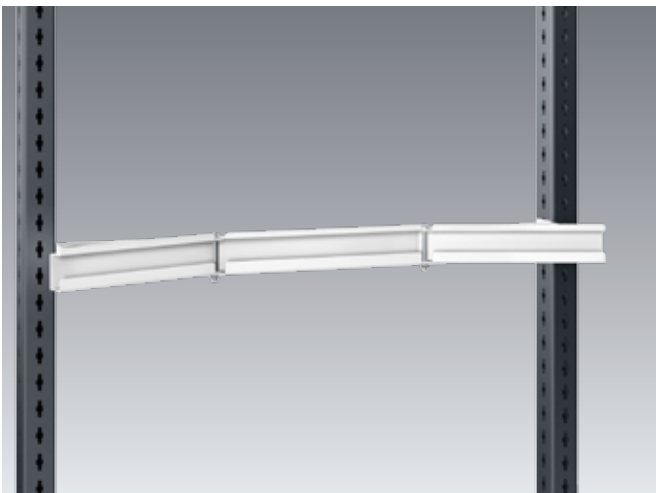
Jointed rail set with bott boxes



- Equipped with pick bins of the bott box series
- Fixed centre rail, left and right two hinged outside rails for ergonomic arrangement of the pick boxes in perfect reach range
- Swivel area of the outside rails 45°
- For mounting on the avero vertical profile
- Total load 25 kg with uniformly distributed load
- ESD version with conductive powder jointed rails and conductive bott boxes
- Colour: light grey (RAL 7035)
- Please refer to pages 50 to 51 for in-depth explanations on the bott boxes.

For system width mm	Dimensions W x D x H mm	Width of the middle rail in mm	Width of the outside rail in mm	Quantity bott boxes 1-1-65	Item no.	Item no. ESD
900	848 x 185 x 88	334	280	6	410 11 044.16	410 11 044.20
1350	1298 x 185 x 88	784	280	9	410 11 045.16	410 11 045.20

Jointed rails

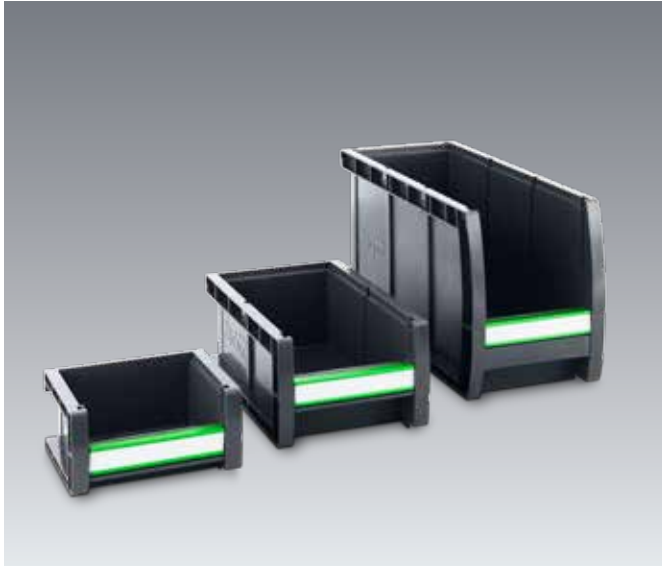


- For mounting pick boxes and storage bins
- Fixed middle rail left and right two hinged outside rails
- For ergonomic arrangement of pick boxes in the perfect reach area
- Swivel area of the outside rails 45°
- For mounting on the avero vertical profile
- Total load 25 kg with uniformly distributed load
- Colour: light grey (RAL 7035)

For system width mm	Dimensions W x D x H mm	Width of the middle rail in mm	Width of the outside rail in mm	Item no.
900	848 x 89 x 77	334	280	410 11 022.20
1350	1298 x 89 x 77	784	280	410 11 023.20

avero | bott boxes

Pick box



- Robust, durable open-front storage bins made of polypropylene
- Smooth inside surface for easy cleaning
- bott boxes of same width can be stacked
- Removable label clip for inserting a paper strip (H = 16 mm)
- Optional labelling clips available in 3 additional colours for colour coding
- Ergonomic handle recess front
- From size 1-3-165 rear handhold also available
- Rear strip for hanging in slotted panels
- From size 1-2-90 insertion facility for a stock record card in credit card format on rear
- Colour: anthracite grey (RAL 7016), ESD version black

Designation pick box	max. load capacity carry position kg	load capacity on a louvre panel kg	Dimensions W x D x H mm	Packaging unit:	Item no.	Item no. ESD
1-1-65	2	2	130 x 100 x 65	48	130 22 045.19	130 22 045.72
1-2-90	4	3	130 x 198 x 90	36	130 22 046.19	130 22 046.72
1-3-165	8	5	130 x 298 x 165	24	130 22 047.19	130 22 047.72

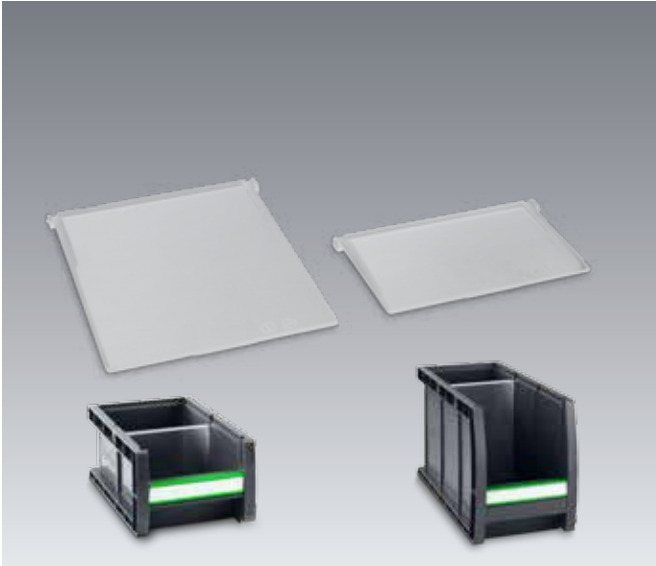
Labelling clip / Labelling strips



- For colour coding the bott boxes
- With groove to insert a paper strip (H = 16 mm)
- For attachment to the bott box Box body

Dimensions W x D x H mm	Clip colour	Packaging unit:	Item no.
103 x 11 x 20	Yellow RAL 1023	36	130 22 024.12
103 x 11 x 20	Blue RAL 5010	36	130 22 024.11
103 x 11 x 20	Red RAL 3001	36	130 22 024.04
103 x 11 x 20	yellow, blue, red	12 + 12 +12	130 22 025
	18 x labelling strips	10 sheets	430 20 001

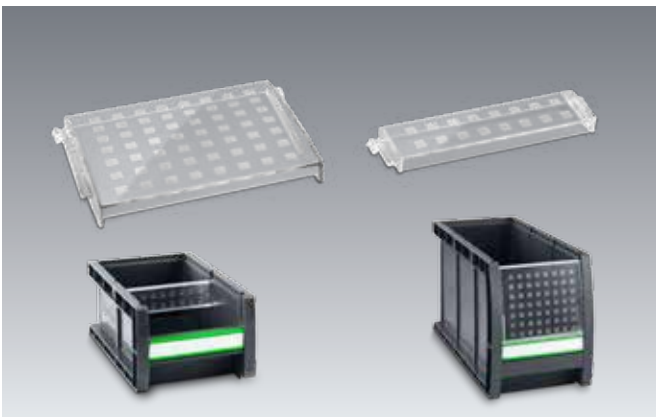
Partition for boxes



- For crosswise partitioning of the bott boxes from size 1-2-90
- Transparent polycarbonate (PC) allows better view of the contents in the back section of the box
- Colour: transparent

Suitable for	Dimensions W x D x H mm	Packaging unit:	Item no.
1-2-90	118 x 6 x 68	6	130 22 031
1-3-165	118 x 6 x 143	6	130 22 032

Windows for boxes



- For insertion front on the bott box
- Turns the pick boxes into a full-fledged storage bin with full filling volume
- Transparent polycarbonate (PC) allows better view of the contents of the box
- From size 1-2-90, the window can also be plugged in a second position as a dosing disk to facilitate complete filling in the rear section and also to allow ergonomic picking of the contents in the front section
- Colour: transparent

Suitable for	Dimensions W x D x H mm	Packaging unit:	Item no.
1-1-65, 1-2-90	118 x 12 x 27	6	130 22 028
1-3-165	118 x 12 x 88	6	130 22 029

avero | Swivel frame & swivel arm with system frame

Swivel frame



- For ergonomic arrangement of assembly materials and tools in the ideal pick space
- Lateral on frame, 2-sided avero perforation for mounting avero accessories with system width 660 mm
- Can be equipped on both sides
- Can be swivelled in the range of 0-90 °
- Can be fixated with clamping lever
- For mounting on the avero vertical profile
- Colour: anthracite grey (RAL 7016)

Dimensions
W x D x H mm

686 x 53 x 950

Usable height
mm

760

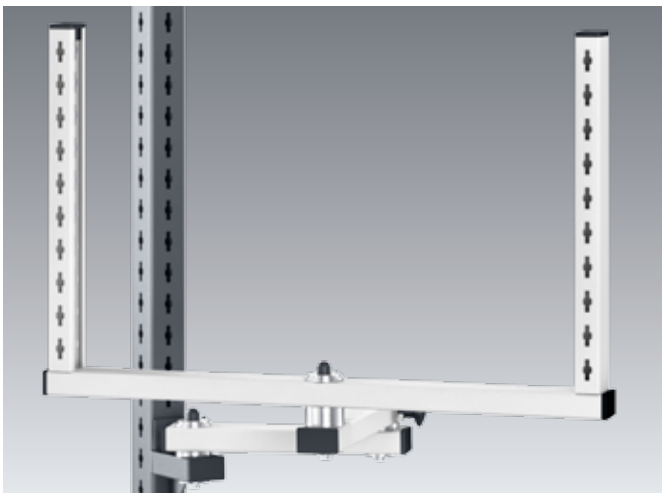
Item no.

410 11 067.19

Item no.
ESD

410 11 067.71

Swivel arm with system frame



- Complete set incl. base support, swivel arm and system frame
- System frame can be rotated 360°
- Lateral on frame, 2-sided avero perforation for mounting avero accessories with system width 660 mm
- Can be equipped on both sides
- 3 rotary joints, 2 swivel arms, lengths 350 and 300 mm
- For mounting on the avero vertical profile
- Load capacity 25 kg
- Colour: light grey (RAL 7035)

Dimensions
W x D x H mm

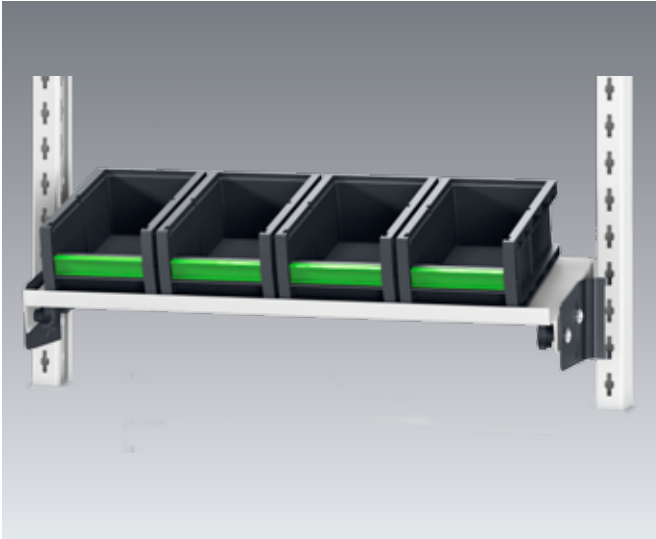
700 x 50 x 450

Item no.

410 11 063.20

avero | Accessories for system and swing frames

Tray set with bottBoxes for System and Swing Frame Profiles and 660mm wide Supply Carriages

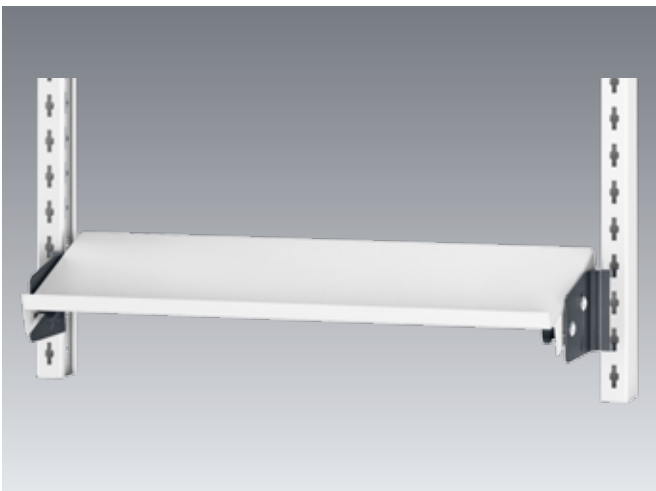


- Equipped with pick bins of the bott box series
- Made of powder-coated sheet steel
- One-sided edging strip 20 mm high
- Tray can be optionally mounted with the edging strip front or rear
- Inclination continuously adjustable +/- 30°
- Depth adjustable
- ESD version with conductive powder-coated tray and conductive bott boxes
- Load capacity 25 kg
- Colour: light grey (RAL 7035)

Info Suitable for 660 mm Supply and Loading Trolleys
Pages 70 - 72

Dimensions W x D x H mm	For system width mm	Depth adjustment area mm	Quantity bott boxes 1-2-90	Quantity bott boxes 1-3-165	Item no.	Item no. ESD
606 x 200 x 126	660	67	4		410 11 080.16	410 11 080.20
606 x 350 x 200	660	217		4	410 11 081.16	410 11 081.20

Tray for System and Swing Frame Profile and 660mm wide Supply Carriages



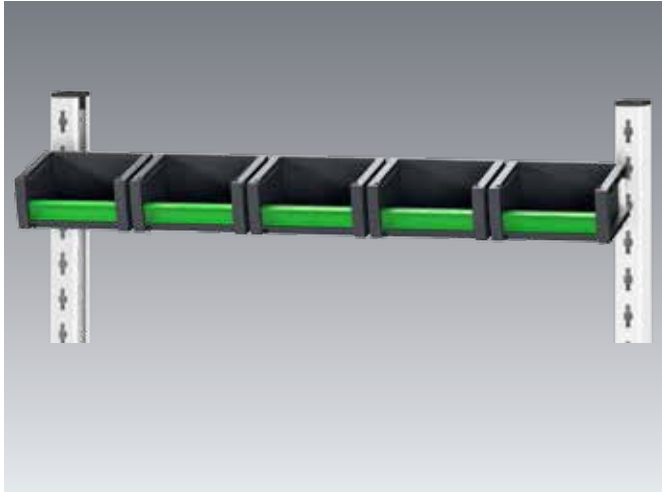
- Made of powder-coated sheet steel
- With holders for suspending in the avero system and swivel arm profile
- One-sided edging strip 20 mm high
- Tray can be optionally mounted with the edging strip front or rear
- Inclination continuously adjustable +/- 30°
- Depth adjustable
- Load capacity 25 kg
- Colour: light grey (RAL 7035)

Info Suitable for 660 mm Supply and Loading Trolleys
Pages 70 - 72

Dimensions W x D x H mm	For system width mm	Depth adjustment area mm	Item no.
606 x 200 x 55	660	67	410 05 021.20
606 x 350 x 55	660	217	410 05 022.20

avero | Accessories for system and swing frames

Support Rail Set for bottBoxes for System and Swing Frame Profile



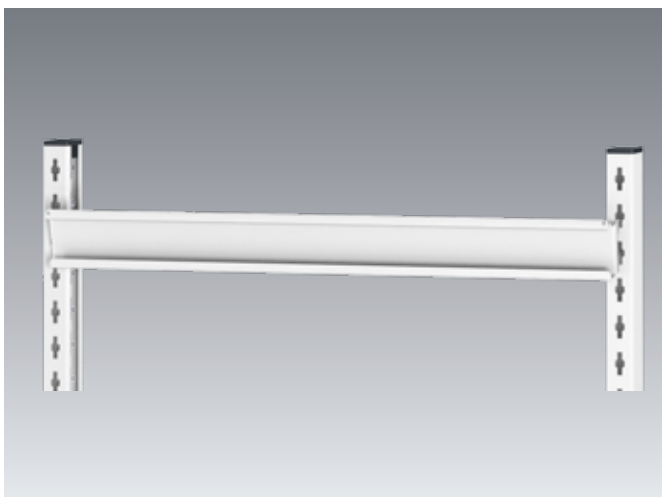
- Equipped with pick bins of the bott box series
- ESD version with conductive powder retainer rail and conductive bott boxes
- Load capacity 25 kg
- Colour: light grey (RAL 7035)

Info

Suitable for 660 mm Supply and Loading Trolleys
Pages 70 - 72

Dimensions W x D x H mm	For system width mm	Quantity bott boxes 1-1-65	Item no.	Item no. ESD
660 x 142 x 80	660	5	410 11 082.16	410 11 082.20

Support Rail for System and Swing Frame Profile



- For mounting pick boxes and storage bins
- For suspending in the avero system and swivel arm profile
- Load capacity 25 kg
- Colour: light grey (RAL 7035)

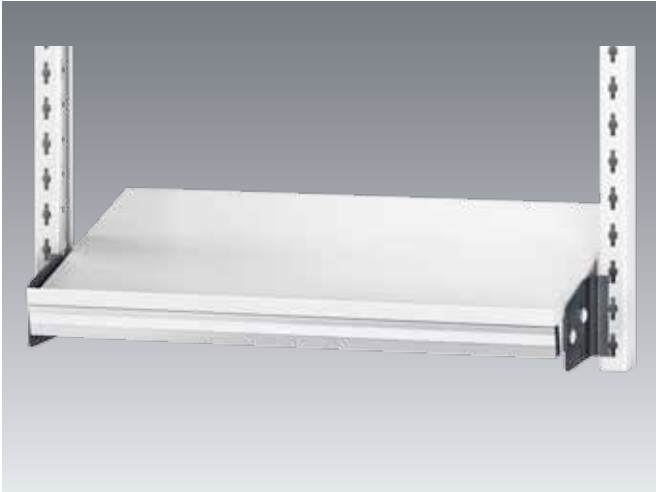
Info

Suitable for 660 mm Supply and Loading Trolleys
Pages 70 - 72

Dimensions W x D x H mm	For system width mm	Item no.
660 x 50 x 70	660	410 11 068.20

avero | Accessories for system frames

Labelling strip for tray



- Document templates for labelling are available for
- Free of charge label templates are available to download from www.bott.de/download
- Aluminium extruded parts
- For mounting on front or rear to the 200 mm and 350 mm deep trays for system width 660 mm
- Groove for inserting a paper strip
- Colour: AL anodized

Info

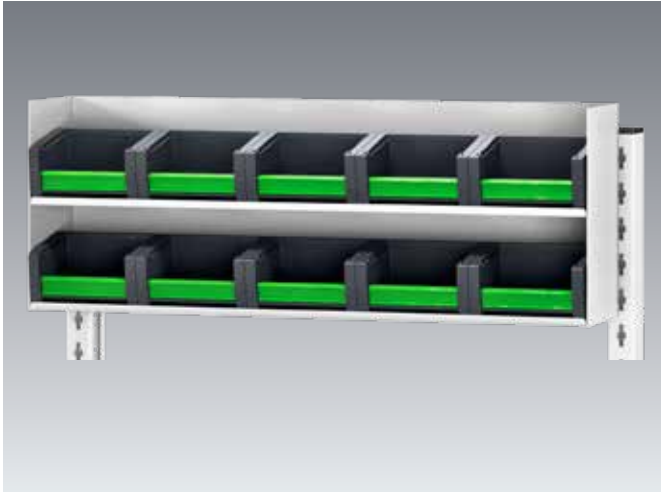
Suitable for 660 mm Supply and Loading Trolleys
Pages 70 - 72

Dimensions W x D x H mm	For system width mm	Item no.
606 x 13 x 35	660	410 11 084.97



avero | Accessories for system frames

Rack set with bott boxes



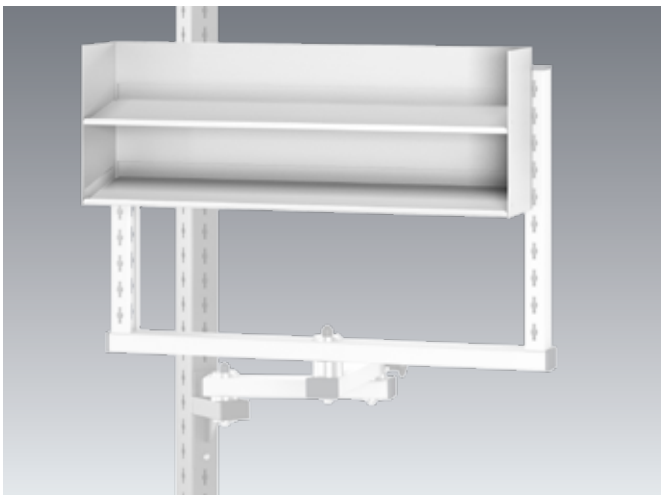
- Equipped with pick bins of the bott box series
- Height-adjustable in 40 mm grid
- For suspending in the avero system and swivel arm profile
- ESD version with conductive powder-coated rack and conductive bott boxes
- Load capacity 20 kg
- Colour: light grey (RAL 7035)

Info

Suitable for 660 mm Supply and Loading Trolleys
Pages 70 - 72

Dimensions W x D x H mm	For system width mm	Quantity bott boxes 1-1-65	Item no.	Item no. ESD
663 x 171 x 240	660	10	410 11 083.16	410 11 083.20

Rack



- Height-adjustable in 40 mm grid
- For double-row equipping with open-front storage bins up to max. 135 mm depth
- For suspending in the avero system and swivel arm profile
- Load capacity 20 kg
- Colour: light grey (RAL 7035)

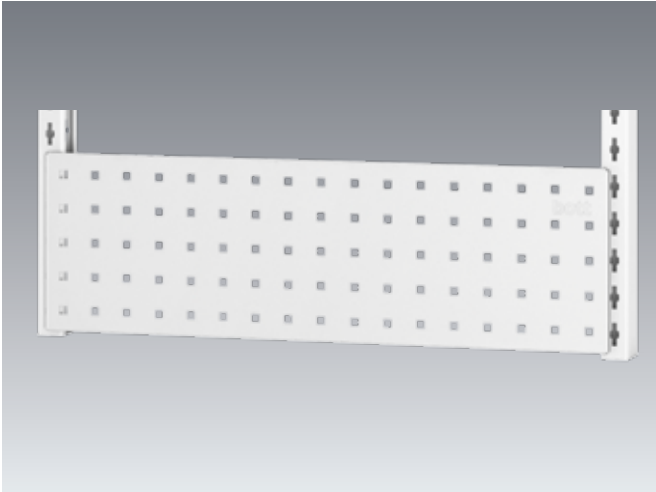
Info

Suitable for 660 mm Supply and Loading Trolleys
Pages 70 - 72

Dimensions W x D x H mm	For system width mm	Item no.
663 x 162 x 240	660	410 11 069.20

avero | Accessories for system frames

perfo perforated panel



- 9.2 x 9.2 mm square holes in 38.1 mm grid
- for mounting holders and accessories to accommodate the bott perfo program
- For suspending in the averø system and swivel arm profile
- Load capacity 25 kg
- Colour: light grey (RAL 7035)

Info

Suitable for 660 mm Supply and Loading Trolleys
Pages 70 - 72

Dimensions W x D x H mm	For system width mm	Item no.
660 x 20 x 200	660	140 25 384.20

Swivel arms with rotating and inclining tray for Euro containers, 400 x 300 mm

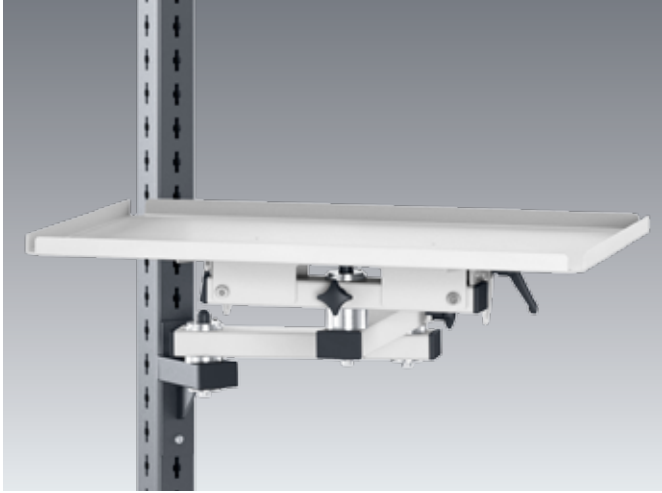


- Complete set incl. base support, swivel arm and system attachment
- Tray can be rotated 360° and can be continuously tilted from 0-45°, fixation with lock lever
- Upward lip, front
- 3 rotary joints, 2 swivel arms, lengths 350 and 300 mm
- For mounting on the averø vertical profile
- Load capacity 25 kg
- Colour: light grey (RAL 7035)

Dimensions W x D mm	Height of upward lip, tray mm	Item no.
315 x 405	15	410 11 059.20
415 x 305	15	410 11 060.20

avero | Accessories for system frame and modular swivel frame

Swivel arm with rotating and inclining tray for Euro containers, 600 x 400 mm



- Complete set incl. base support, swivel arm and system attachment
- Trough can be rotated 360° and can be continuously tilted from 0-45°, Fixation with lock lever
- Upward lip on all sides
- 3 rotary joints, 2 swivel arms, lengths 350 and 300 mm
- For mounting on the avero vertical profile
- Load capacity 25 kg
- Colour: light grey (RAL 7035)

Dimensions
W x D mm

610 x 410

Height of upward
lip, tray mm

15

Item no.

410 11 062.20

Swivel arm with rotatable tray



- Complete set incl. base support, swivel arm and system attachment
- Tray can be rotated 360°
- Upward lip on all sides
- 3 rotary joints, 2 swivel arms, lengths 350 and 300 mm
- For mounting on the avero vertical profile
- Load capacity 25 kg
- Colour: light grey (RAL 7035)

Dimensions
W x D mm

500 x 400

Height of upward
lip, tray mm

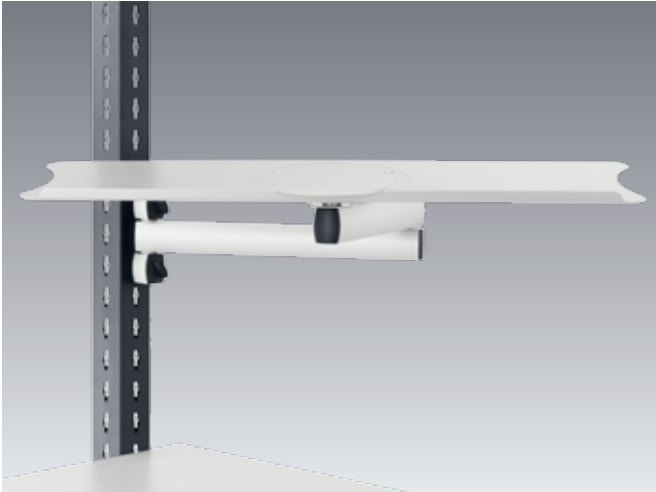
15

Item no.

410 11 061.20

avero | Accessories for bench top

Swivel arm for the keyboard



- Two-part hinged arm with a range of 505 mm
- Storage shelf can be tilted and rotated, surface 640 x 172 mm (WxD)
- Can be loaded up to 10 kg
- Colour: Aluminium anodized / silver



Storage shelf surface W x D mm	Item no.
640 x 172	410 11 085

Keyboard drawer



- For mounting a standard PC keyboard
- For mounting on the cross bars of the avero Framework
- Ergonomic wrist rest
- Aluminium-sheet housing
- Plastic keyboard drawer
- Colour: light grey

Dimensions W x D x H mm	Effective area for keyboard mm	Item no.
560 x 400 x 100	525 x 250 x 75	405 19 010

avero | Accessories for bench frame

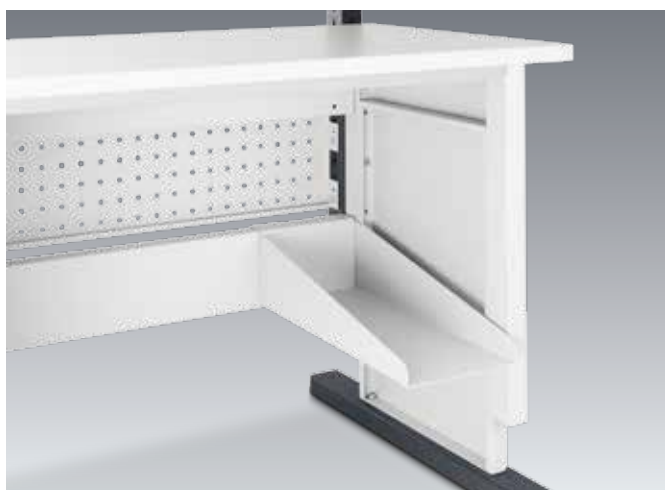
Roller set for Frameworks



- Upgrade kit from avero Frameworks to mobile standalone workstation
- 4 castors 100 mm in diameter with arrestable brake
- Cross member for mounting to the foot profiles of the Frameworks
- Raises the work surface by 125 mm
- ESD version with conductive powder coating of the crossbar and conductive castors
- Load capacity 200 kg
- Colour: anthracite grey (RAL 7016)

Suitable for use with Framework mm	Dimensions Ø x H mm	Item no.	Item no. ESD
900	100 x 125	414 30 079.19	414 30 079.71
1350	100 x 125	414 30 080.19	414 30 080.71
1800	100 x 125	414 30 081.19	414 30 081.71

PC bracket



- For suspension in the cross connection of avero desk base
- Base plate for installation of PC housing up to a height of 465 mm
- Colour: light grey



Dimensions W x D x H mm	Item no.
220 x 544 x 134	410 11 113.16

avero | Accessories for bench frame

Footrest



- Ergonomic foot support 445 x 350 mm (W x D)
- Continuously adjustable, gas spring assisted tilt adjustment with foot pedal from 0° to 20°
- 210 mm height adjustable in increments of 15 mm
- With antislip ribbed rubber mat
- Freestanding version with 4 adjustable feet to compensate for uneven floors
- Suspended version with two grid strips for hanging in the desk cross-member
- ESD version with conductive powder coating, conductive ribbed rubber mat, conductive adjustable feet (freestanding version) and grounding cable
- Colour: Metal parts light grey (RAL 7035), Black ribbed rubber

Type of installation	Item no.	Item no. ESD
Can be suspended	414 02 001.16	414 02 003.16
Freestanding	414 02 002.16	414 02 004.16



avero | Accessories for bench frame

Hanging drawer cabinet



- For mounting under avero standalone workstations, multi-user system and transportation lines
- Optionally with central lock / cubioKey for all drawers or without lock
- Lock cylinder can be replaced with single-lock key
- Drawers with 100% extension
- Drawer pans made of galvanised sheet steel
- Load capacity 30 kg per drawer
- 400 mm-high drawer with extra, depth adjustable small parts tray
- Colour: light grey (RAL 7035)

Design	Drawer mm	Dimensions W x D x H mm	Item no.
Without lock	2 x 200	225 x 500 x 500	400 33 013.20
With lock / cubioKey	2 x 200	225 x 500 x 500	400 33 014.20
Without lock	1 x 400	225 x 500 x 500	400 33 015.20
With lock / cubioKey	1 x 400	225 x 500 x 500	400 33 016.20
cubioPIN electromechanical closing and locking system instead of cubioKey			126 02 053.90M
Attachment set			410 11 013.20

Hanging drawer cabinet



- For mounting under avero standalone workstations, multi-user system and transportation lines
- Optionally with central lock for all drawers or without lock
- Lock cylinder can be replaced with single-lock key
- Drawers with 100% extraction
- Drawer pans made of galvanised sheet steel
- Load capacity 30 kg per drawer
- Counter pull-out stop in variants with lock / cubioKey
- Colour: light grey (RAL 7035)

Design	Drawer mm	Dimensions W x D x H mm	Item no.
Without lock	2 x 100	375 x 500 x 300	400 33 017.20
With lock / cubioKey	2 x 100	375 x 500 x 300	400 33 018.20
Without lock	1 x 200	375 x 500 x 300	400 33 019.20
With lock / cubioKey	1 x 200	375 x 500 x 300	400 33 020.20
cubioPIN electromechanical closing and locking system instead of cubioKey			126 02 053.90M
Attachment set			410 11 012.20

avero | Accessories for bench frame

Hanging drawer cabinet



- For mounting under avero standalone workstations, multi-user system and transportation lines
- Optionally with central lock for all drawers or without lock
- Lock cylinder can be replaced with single-lock key
- Drawers with 100% extension
- Drawer pans made of galvanised sheet steel
- Load capacity 30 kg per drawer
- Colour: light grey (RAL 7035)

Design	Drawer mm	Dimensions W x D x H mm	Item no.
Without lock	4 x 100	375 x 500 x 500	400 33 021.20
With lock / cubioKey	4 x 100	375 x 500 x 500	400 33 022.20
Without lock	2 x 200	375 x 500 x 500	400 33 023.20
With lock / cubioKey	2 x 200	375 x 500 x 500	400 33 024.20
cubioPIN electromechanical closing and locking system instead of cubioKey			126 02 053.90M
Attachment set			410 11 012.20

Hanging drawer cabinet cubio

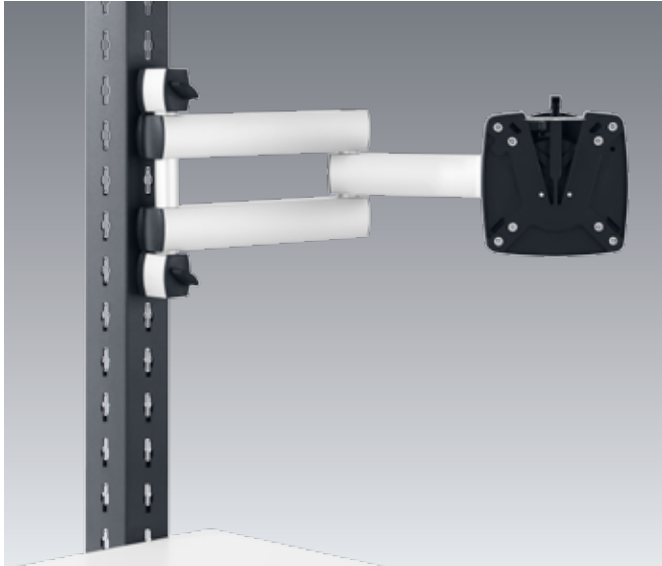


- Intelligent drawer catch with protection against falling out
- Mechanical closing system with 5-pin interchangeable core for optional design of lock systems
- Optional cubioPIN electronic locking system
- All drawers with full extraction, 100% pull-out distance and 40 mm over-extension
- Standard-duty drawer slide with 75 kg load capacity
- Ergonomic bow handle with access from top and bottom
- Colour: light grey (RAL 7035)

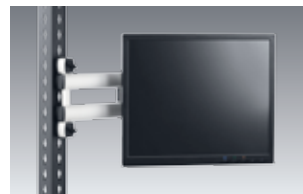
Design	Dimensions W x D x H mm	Item no.	Item no. ESD
1 x 150 mm drawer	525 x 525 x 250	400 10 001.16 V	400 10 001.20 V
1 x 300 mm drawer	525 x 525 x 400	400 10 126.16 V	400 10 126.20 V
2 x 150 mm drawer	525 x 525 x 400	400 10 005.16 V	400 10 005.20 V
2 x 75 mm drawers + 1 x 150 mm drawer	525 x 525 x 400	400 10 106.16 V	400 10 106.20 V
cubioPIN electromechanical closing and locking system instead of cubioKey		126 02 053.90M	126 02 053.90M
Attachment set			410 11 011.20

avero | Accessories for bench top

Monitor swivel arm



- reinforced two-part swivel arm with a 505mm reach
- Ball-and-socket joint for flexible inclination and turning of the monitor
- Removable monitor retaining plate with VESA 75/100 bracket
- For monitors up to 15 kg
- For mounting on the avero vertical profile
- Colour: Anodised aluminium



	Item no.
	410 11 087

Monitor bracket, short



- Ball-and-socket joint for flexible inclination and turning of the monitor
- Removable monitor retaining plate with VESA 75/100 bracket
- For monitors up to 15 kg
- For mounting on the avero vertical profile
- Colour: Anodised aluminium



	Item no.
	410 11 086

avero | Accessories for bench top

perfo monitor bracket, short



- Removable monitor retaining plate with VESA 75/100 bracket
- Ball-and-socket joint for flexible inclination and turning of the monitor
- For monitors up to 10 kg
- For mounting on the perfo perforated panels
- Colour: anthracite grey (RAL 7016)



	Item no.
	410 11 163

Keyboard holder for monitor swivel arm and monitor bracket

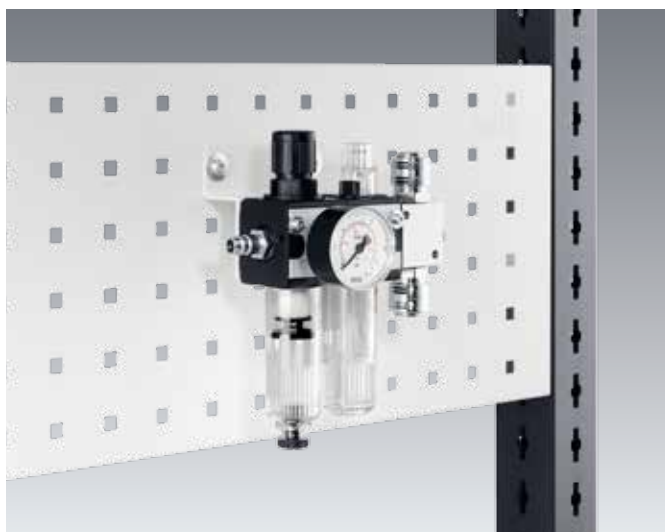


- For mounting on the monitor retaining plate
- Tray area 640 x 200 mm (WxD)
- Colour: light grey (RAL 7035)

	Item no.
	421 05 024.20

avero | Accessories for bench top

Pneumatics



- For mounting on the perfo panels
- Input quick-release coupling G¼"
- Output quick-release coupling 2 x G¼"



Designation	Item no.
Supply unit, pressure controller, filter, lubrication	800 02 001
Distributor	800 01 007

Balancer



- For suspending on the avero track rail carriage

Designation	Extension length mm	Load bearing capacity kg	Item no.
Balancer with rope hoist	2300	1.0 to 2.0	800 03 002
Balancer with hose hoist	1600	0.5 to 1.5	800 03 001

avero | Accessories for bench top

ESD accessories



1. ESD grounding box

- As ground connection for personnel grounding (Earth Bonding Point)
- Plastic box front with 3 push-button connections, 10 mm diameter
- Per push-button connection, one safety resistor, 1 MOhm, 2 m connection lead with ringscrew 4 mm diameter

2. ESD wrist strap

- Elastic wrist strap with woven, conductive fibres
- Size adjustable through loop
- Safety resistor, 1 MOhm
- Highly-elastic spiral cable, 2.4 m long with push-button connection 3 mm on wrist strap and 10 mm for connection to ESD grounding box
- Colour, wrist strap: blue
- Colour, spiral cable: black

Designation	Figure	Item no.
Grounding box	1	500 01 026.90
Wrist strap with spiral cable	2	508 10 010

Turntable



- Stainless steel plate with ribbed rubber mat
- ESD version: conductive rubber lining and grounding cable
- Load-bearing capacity: 180 kg
- Version with indexing through 45° grid

Design	Dimensions Ø x H mm	Item no.	Item no. ESD
Without indexing	380 x 20	080 10 036.96	080 10 056.20
Without indexing	500 x 20	080 10 034.96	080 10 054.20
With indexing	380 x 20	080 10 035.96	080 10 055.20
With indexing	500 x 20	080 10 009.96	080 10 053.20

avero | Accessories for bench top

Hinged arm light with compact fluorescent lamp



- Spring-balanced rod, length 430 + 400 mm
- Ergonomically formed thumb screw for tool-free adjusting
- Ball head for turning and swivelling the light body
- Mirrored parabolic louvres for glare-free work
- Energy-saving compact fluorescent lighting
- Neutral White 4000 Kelvin
- Adapter for mounting on the avero vertical profile with swivel pin for swivelling the lamp
- Optionally with additional swivel arm, length 350 mm and another rotary joint
- Colour: light grey

Design	Light level at 50 cm	With light	Item no.
With adapter	2000 lx	36 W	505 02 071
With adapter with swivel arm	2000 lx	36 W	505 02 074
With adapter UK-Version	2000 lx	36 W	505 02 086
With adapter with swivel arm UK-Version	2000 lx	36 W	505 02 087

LED hinged arm lamps



- Spring-balanced rod, length 400 + 385 mm
- Ergonomically formed thumb screw for tool-free adjusting
- 3D joint for turning and swivelling the light body
- Conical prismatic screen for glare-free work and homogeneous luminous surface
- Special, energy efficient LED module
- Neutral White 4000 Kelvin
- Adapter for mounting on the avero vertical profile with swivel pin for swivelling the lamp
- Optionally with additional swivel arm, length 350 mm and another rotary joint
- Colour: Anodised aluminium

Design	Light level at 50 cm	With light	Item no.
With adapter	2500 lx	31 W LED	505 02 072
With adapter with swivel arm	2500 lx	31 W LED	505 02 075
With adapter UK-Version	2500 lx	31 W LED	505 02 088
With adapter with swivel arm UK-Version	2500 lx	31 W LED	505 02 089

avero | Accessories for bench top

LED hinged arm magnifier light



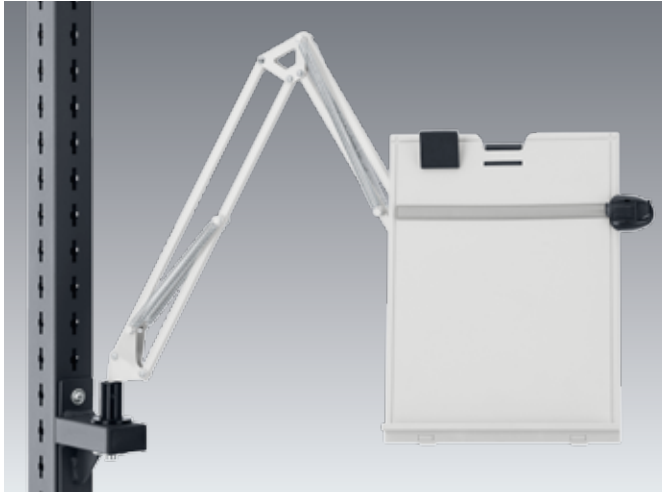
- Spring-balanced rod, length 485 + 500 mm
- Ergonomically-formed thumb screw for tool-free adjusting
- 3D joint for turning and swivelling the light body
- Special, energy efficient LED module
- Neutral White 4000 Kelvin
- Scratch-proof glass magnifying glass with 3.5 dioptries (2 x magnification)
- Large field of vision with 153 mm diameter
- Adapter for mounting on the avero vertical profile with swivel pin for swivelling the lamp
- Optionally with additional swivel arm, length 350 mm and another rotary joint

Design	Light level at 50 cm	With light	Item no.
With adapter	6000 lx	14 W LED	505 02 073
With adapter with swivel arm	6000 lx	14 W LED	505 02 076
With adapter UK-Version	6000 lx	14 W LED	505 02 090
With adapter with swivel arm UK-Version	6000 lx	14 W LED	505 02 091



avero | Accessories for bench top

Drawing holder



- Clipboard for documents up to A4 portrait format
- Spring-assisted hinged arms
- Height-adjustable ruler
- for installation on the desktop or optionally on avero vertical profile
- Colour: light grey

Design	Item no.
Drawing holder	810 05 004
Adapter for mounting on the avero vertical profile	410 11 088.19

Display panel system with holder



- Bracket system with 10 transparent hinged panels for mess-free storage of information sheets
- Perfect for holding A4 sheets in portrait format
- for mounting on the avero vertical profile
- Colour: Stainless steel bracket, black hinged panel frame

	Item no.	Item no. ESD
	410 11 089	410 11 151

avero | Accessories for bench top

File compartment



- To accommodate A4 folders
- for mounting on the avero vertical profile
- Made of powder-coated sheet steel
- Colour: light grey (RAL 7035)

Dimensions W x D x H mm	Item no.
100 x 288 x 340	421 05 036.16

Bottle holders



- To accommodate bottles up to 96 mm diameter and Tetra Pack containers
- for mounting on the avero vertical profile
- Material: Galvanised steel

Dimensions Ø x H mm	Item no.
96 x 162	140 21 058

avero | Seating

Industrial chairs



- Seat height adjustment with high-grade gas spring
- Seat tilt and depth adjustable, rounded seat front-edge for reduced pressure stress
- Backrest with permanent contact function, height and tilt adjustable, width reduced in the upper backrest area for optimum freedom of movement
- Upholstery elements ideally adapted to the body anatomy for the seat cushion and backrest with durable, breathable covering fabric which can be replaced as desired
- Optional five-star base with floor glides or castors
- Version with a wider height adjustment range additionally with adjustable and folding climbing aid
- ESD version with conductive covering fabric, volume-conductive black plastic parts and conductive castors
- Colour: Aluminium base black, Plastic elements basalt grey, fabric anthracite

Design	Height adjustment mm	Item no.	Item no. ESD
Glides	450-620	886 01 063.90	886 01 066.90
Roll	450-620	886 01 062.90	886 01 065.90
Glides with climbing aid	590-870	886 01 064.90	886 01 067.90



Container trolley with height regulation for standing workstations



- Loading height: max. 840 mm (evenly distributed)
- Load: max. 105 kg (evenly distributed)
- sturdy base with 100mm diameter castors, two of which are braked
- Spring-force can be reduced by unhooking individual springs
- Automatic tracking of the load area through spring packets after removing individual boxes
- ESD version: conductive powder coating, conductive rollers
- Light grey



Dimensions W x D x H mm	Load area W x D mm	Item no.	Item no. ESD
635 x 640 x 1875	600 x 400	110 34 018.16	110 34 019.20
435 x 790 x 1875	400 x 600	110 34 021.16	110 34 021.20

Container trolley with height regulation for seating workstations



- Loading height: max. 600 mm (evenly distributed)
- Load: max. 75 kg (evenly distributed)
- sturdy base with 100mm diameter castors, two of which are braked
- Spring-force can be reduced by unhooking individual springs
- Automatic tracking of the load area through spring packets after removing individual boxes
- ESD version: conductive powder coating, conductive rollers
- Colour: light grey

Dimensions W x D x H mm	Load area W x D mm	Item no.	Item no. ESD
635 x 640 x 1200	600 x 400	110 34 005.16	110 34 013.20
435 x 790 x 1200	400 x 600	110 34 020.16	110 34 020.20

avero | Mobile systems

Supply Carriages



- For the provision of materials and tools in the workstation
- Solid floor group with 100 mm diameter castors, 2 of them lockable
- available in 2 heights
- avero Vertical profile in the middle installation position, for double-sided equipping and positioning the carriage laterally at the work place
- Mounting facility for the avero accessories in system widths 660, 900 and 1350 mm
- Load capacity 210 kg
- ESD version with conductive powder coating and conductive castors
- Colour: anthracite grey (RAL 7016)

Info

you will find suitable accessories for the supply carriages starting on page 36

Dimensions W x D x H mm	For system width mm	Item no.	Item no. ESD
715 x 675 x 1315	660	410 14 022.19	410 14 022.71
715 x 675 x 1795	660	410 14 021.19	410 14 021.71
955 x 675 x 1315	900	410 14 024.19	410 14 024.71
955 x 675 x 1795	900	410 14 023.19	410 14 023.71
1405 x 675 x 1315	1350	410 14 026.19	410 14 026.71
1405 x 675 x 1795	1350	410 14 025.19	410 14 025.71

Set of push handles for supply and loading carriages



- Colour: anthracite grey (RAL 7016)
- for mounting on the avero vertical profile

Design	Item no.
2 push handles	410 11 094.71

Loading Carriage



- For the provision of materials and tools in the workstation
- Solid floor group with 100 mm diameter castors, 2 of them lockable
- available in 2 heights
- avero Vertical profile in the off-centre installation position, for one-sided equipping and positioning the carriage from behind at the work place
- Mounting facility for the avero accessories in system widths 660, 900 and 1350 mm
- Load capacity 210 kg
- ESD version with conductive powder coating and conductive castors
- Colour: anthracite grey (RAL 7016)

Info you will find suitable accessories for the supply carriages starting on page 36

Dimensions W x D x H mm	For system width mm	Item no.	Item no. ESD
715 x 675 x 1315	660	410 14 007.19	410 14 007.71
715 x 675 x 1795	660	410 14 006.19	410 14 006.71
955 x 675 x 1315	900	410 14 002.19	410 14 002.71
955 x 675 x 1795	900	410 14 001.19	410 14 001.71
1405 x 675 x 1315	1350	410 14 004.19	410 14 004.71
1405 x 675 x 1795	1350	410 14 003.19	410 14 003.71

Base plate for supply and loading carriages

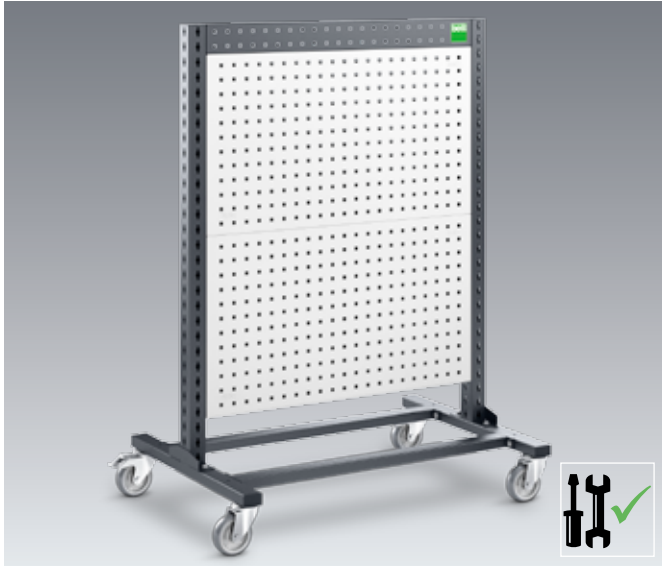


- For mounting on the floor group of the supply cart
- Edge-stripping on all sides, 25 mm high
- Colour: anthracite grey (RAL 7016)

Dimensions W x D x H mm	For system width mm	For effective width mm	Item no.
715 x 660 x 25	660	610	421 05 039.71
955 x 660 x 25	900	850	421 05 031.71
1405 x 660 x 25	1350	1300	421 05 037.71

avero | Mobile systems

Supply cart with perfo perforated panels



- For the provision of tools and equipment at the workstation
- Solid floor group with 100 mm diameter castors, 2 of them lockable
- available in 2 heights
- avero vertical profile mounted centred the floor group
- Two-sided placement with perfo perforated panels
- Total load capacity 210 kg
- ESD version with conductive powder coating and conductive castors
- Colour: Base anthracite grey (RAL 7016), perfo perforated panels light grey (RAL 7035)

Dimensions W x D x H mm	For system width mm	perfo perfo- rated panels	Dimensions W x D mm perforated panels	Item no.	Item no. ESD
955 x 675 x 1315	900	2 x 2	848 x 480	410 14 012.16	410 14 012.20
955 x 675 x 1795	900	2 x 3	848 x 480	410 14 011.16	410 14 011.20
1405 x 675 x 1315	1350	2 x 2	1298 x 480	410 14 014.16	410 14 014.20
1405 x 675 x 1795	1350	2 x 3	1298 x 480	410 14 013.16	410 14 013.20

Loading Carriages with Trays



- For the provision of materials at the workstation
- Solid floor group with 100 mm diameter castors, 2 of them lockable
- available in 2 heights
- avero vertical profile mounted off-centre on the floor group
- Placement with tilt and depth adjustable shelves
- Total load capacity 210 kg
- ESD version with conductive powder coating and conductive castors
- Anthracite grey (RAL 7016) / light grey (RAL 7035)

Dimensions W x D x H mm	For system width mm	Number of shelves	Dimensions W x D mm	Item no.	Item no. ESD
715 x 675 x 1315		2	606 x 650	410 14 020.16	410 14 020.20
715 x 675 x 1315		3	606 x 650	410 14 019.16	410 14 019.20
955 x 675 x 1315	900	2	846 x 650	410 14 016.16	410 14 016.20
955 x 675 x 1795	900	3	846 x 650	410 14 015.16	410 14 015.20
1405 x 675 x 1315	1350	2	1296 x 650	410 14 018.16	410 14 018.20
1405 x 675 x 1795	1350	3	1296 x 650	410 14 017.16	410 14 017.20

Material stands can be equipped on both sides



- Especially suitable for Euro boxes
- Ideal for picking and assembly work
- Gas spring-assisted height adjustment
- Adjustable tilt from 0° to 20°
- Swivel castors ø 75 mm ensure optimum stability and manoeuvrability
- Swivel castor lock (A = 2 pieces / B = 4 pieces)
- Storage shelf with 20 mm upward lip front

Fig.	Platform dimensions W x D mm	Height mm	max. Surface load kg	max. Lifting device kg	Item no.
A	500 x 350	620 - 875	100	25	886 03 001
B	800 x 600	730 - 980	125	50	886 03 002

Side cart



- Continuously adjustable working height from 770-1050 mm
- Fixation with clamp lever
- 4 swivel castors, 2 of them full lock-type castors (blocks the rolling and swivel movement of the swivel castors)
- ESD version: conductive powder coating, conductive rollers
- Delivery without worktop

Designation	Dimensions W x D mm	Item no.	Item no. ESD
Base without panel	560 x 640	110 34 002.16	110 34 010.20

Matching worktops for side trolley

Worktop quality	Dimensions W x D mm	Item no.
Directly coated	600 x 665 x 30	112 01 178.01
Directly coated ESD	600 x 665 x 30	112 01 178.04
Laminate coated	600 x 665 x 30	112 01 178.02
ESD laminate coated	600 x 665 x 30	112 01 178.05
Beech multiplex	600 x 665 x 30	112 01 178.08

bott



Work efficiently

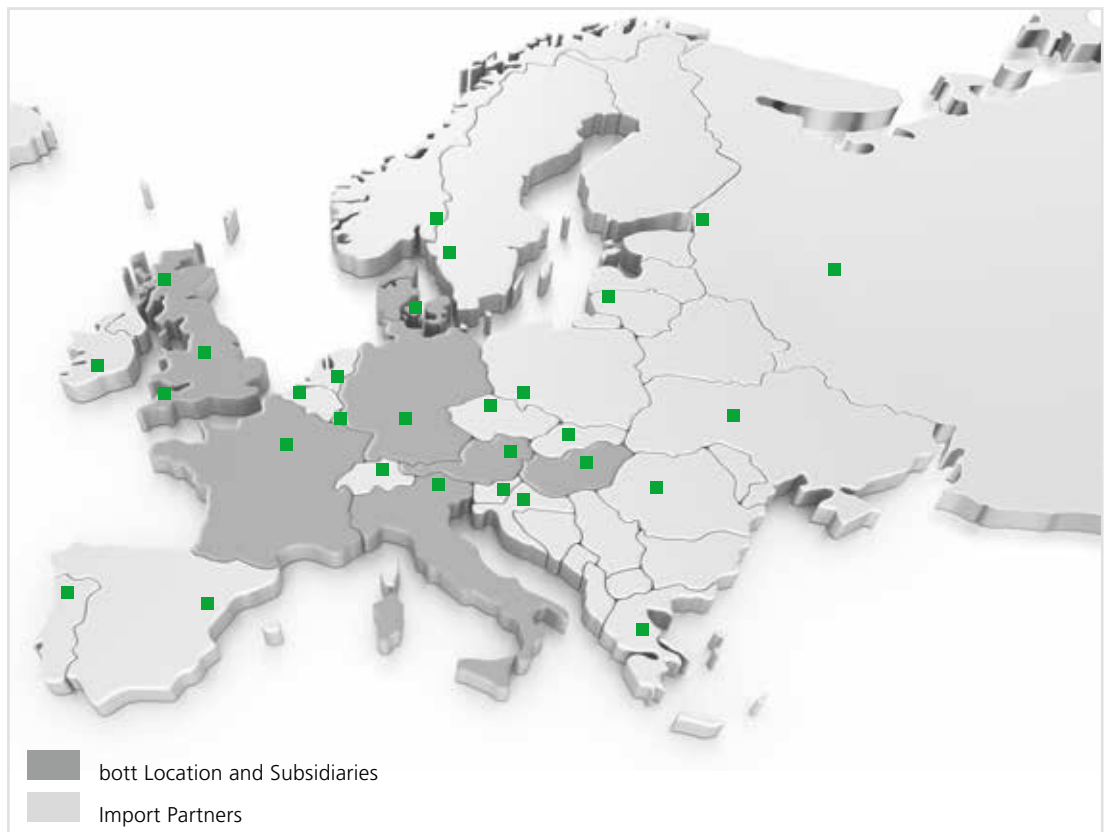
Customers worldwide recognise bott as a leading manufacturer of in-vehicle equipment, workstation systems and workshop equipment and use our innovative product lines in all fields.

Although bott products are highly diverse, they all have the system concept and professional application by their users in common.

While bott takes every care to ensure the accuracy of the information contained within this catalogue, it does not accept any responsibility or liability whatsoever for any inaccuracy of any information or illustrations contained in this catalogue. Colours shown may not match the actual colours due to printing limitations. Reproduction in part or whole is permitted only with written consent.

With production facilities in Germany, England and Hungary, as well as licensees and importers all over the world, bott provides an extensive service network and pays attention to local needs - from planning to installation.

At the bott group's German headquarters, the latest information is gathered from every market to enable the evolution of new and innovative strategies. At the same time, efficient working and the customer's safety are always the top priority.



cubio, the workshop equipment



bott vario vehicle equipment





STORAGE DESIGN LIMITED
Primrose Hill
Cowbridge
South Wales
CF71 7DU
Tel: 01446 772614
Fax: 01446 774770
email: info@storage-design.ltd.uk
web: www.storage-design.ltd.uk